



"Odin" Multicat 3013

Lindtsewijk 10E
3336 LE Zwijndrecht
The Netherlands

T: +31 (0)78-6192507
E: chartering@hermansr.com



GENERAL

Yard no. : Damen Shipyards 571630
 Delivery date : June 2010
 Type : Multicat 3013
 Basic functions : Towing, Anchor handling, Dredge support, Supply, Survey, Wind farm support
 Classification : Bureau Veritas I * Tug Unrestricted navigation * MACH, AUT-UMS
 Nat. Authorities : Dutch Shipping Inspection Unrestricted service
 Callsign : PCCQ
 IMO No. : 9572824
 MMSI No. : 245307000

DIMENSIONS

Length O.A : 29.90 m
 Width O.A : 13.50 m
 Min draft : 2.60 m
 Max draft : 2.80 m
 GT/ NT : 341 GT/ 102 NT

TANK CAPACITIES

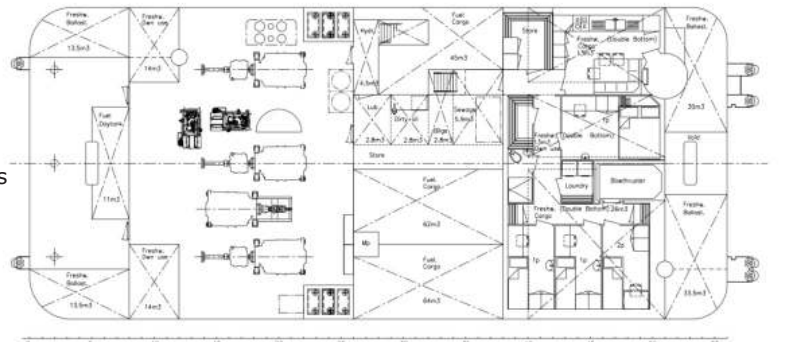
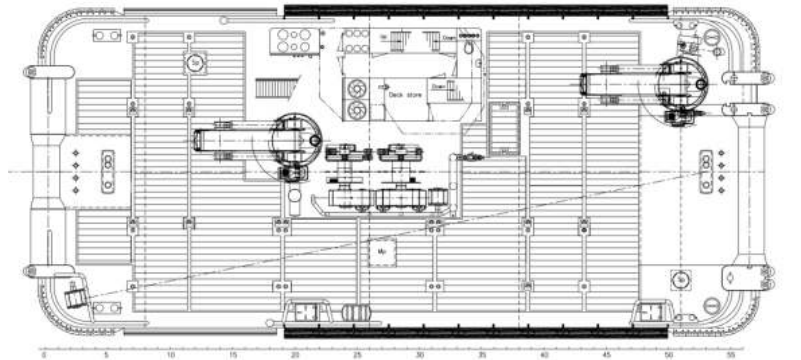
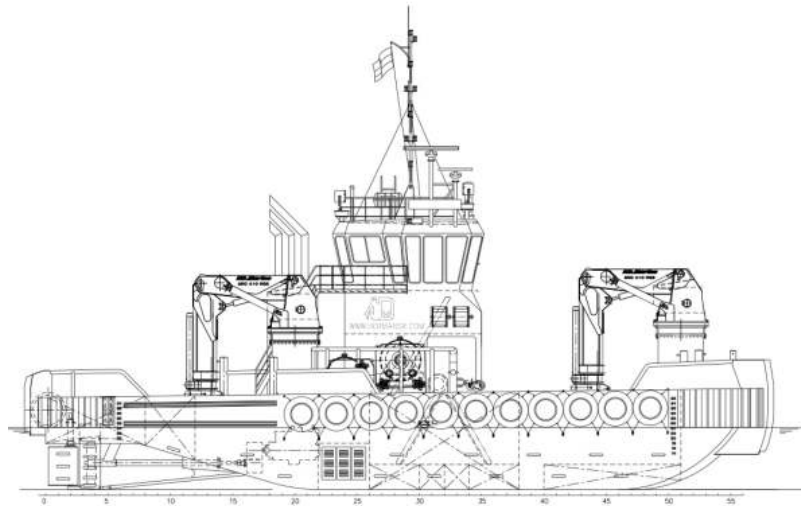
Fuel oil : 205.0 m³
 Fresh water : 55.0 m³
 Sewage : 5.9 m³
 Dirty oil : 2.8 m³
 Lub. oil : 2.8 m³
 Hydraulic oil : 4.5 m³
 Bilge water : 2.8 m³

PERFORMANCES

Bollard pull : 35 ton (m)
 Speed : 10.6 knots

PROPULSION SYSTEM

Main engines : 3x Caterpillar 3412D TTA
 Total power : 1896 kW (2550 bhp) at 1800 rpm
 Gear boxes : 3x Reintjes WAF 464 5.591:1
 Propulsion : 3x Promarin fixed propellers in Optima nozzles
 Diameter props : 1700 mm
 Bow thruster : Hydraulic driven 200 kW (272 bhp) 360°
 Rudders : 3x Fishtail rudders





"Odin" Multicat 3013

Lindtsedijk 10E
3336 LE Zwijndrecht
The Netherlands

T: +31 (0)78-6192507
E: chartering@hermansr.com

AUXILIARY EQUIPMENT

- Generator sets : 2x Caterpillar C4.4, 107,5 kVA each
- Hydraulic power : Caterpillar 3412D TTA, 632 kW
- Fuel oil separator : Alfa Laval MIB 303
- Air compressor : Alup SCK 30-10 scr

DECK LAYOUT

- Anchor : 1x 360 kg Pool TW (HHP) + 1x spare
- Chain : 19mm stud-link anchor chain 275m
- Anchor winch : Ridderinkhof, hydraulic driver
- Deck cranes : 2x HS Marine AKC 410 HE2
36.85 ton @ 8.42m & 22.8 ton @13.10m
- Anchor handling winch: Kraaijeveld KA-30/2-H-TR
- Capacity : 100 ton at 8m/min pulling force (1st layer)
50 ton at 12 m/min pulling force (1st layer)
20 ton at 32 m/min pulling force (1st layer)
150 ton brake holding force (1st layer)
- Towing winch : Kraaijeveld KA-20/2-H-TR
- Capacity : 40 ton at 12m/min pulling force (1st layer)
20 ton at 24 m/min pulling force (1st layer)
100 ton brake holding force (1st layer)
- Towing hook : 2x Mampaey 20 ton SWL
- Tugger winches : 2x Dromec 12 ton at 4.5 m/min
- Free deck space : 180 m²
- Maximum deck-load : 15 ton/m²
- Container capacity : 5x 20" + 2x 10" in one time
- Towing pins : Fore WK hydraulics triple pins in a row type
Aft WK hydraulics triple pin type

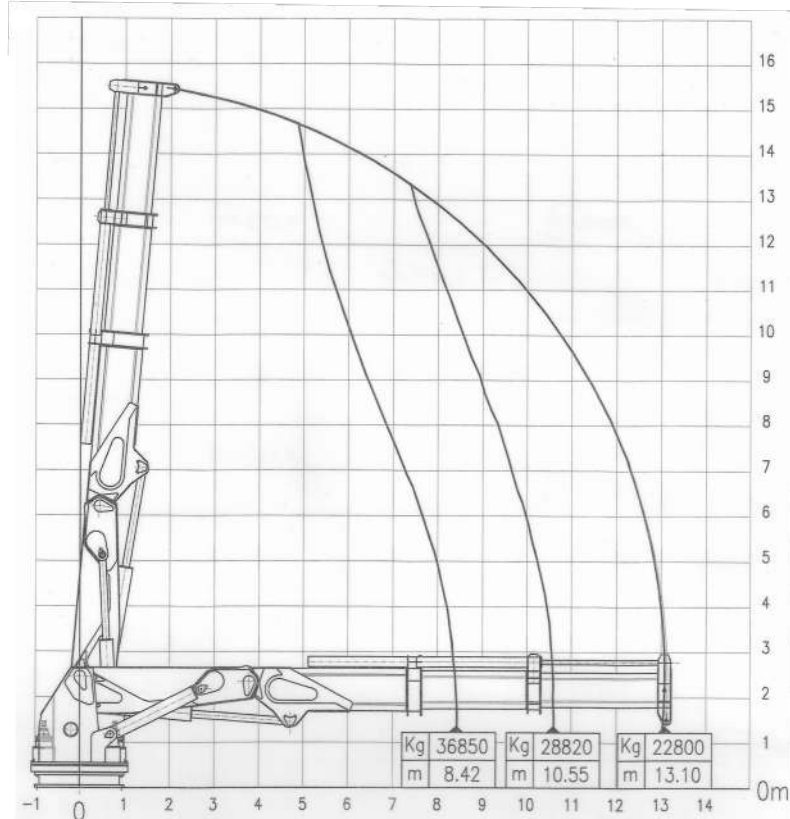
ACCOMMODATION

Heated and air conditioned living spaces for six persons, consisting of a captain's cabin, one single crew cabin, two double crew cabins, a galley and sanitary facilities.

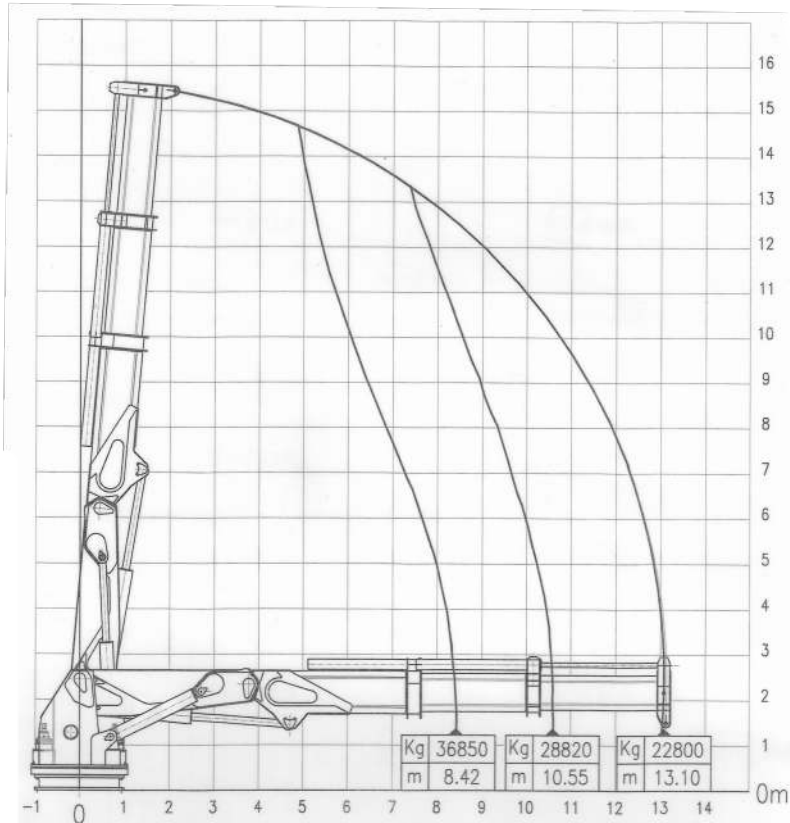
NAUTICAL AND COMMUNICATION EQUIPMENT

- According GMDSS : A3
- Search lights : 2x Pesch 2000 W
- Radar system : 1x Furuno, FAR 2117
- Compass : 1x Cassens & Plat, Reflecta 1
- Gyro compass : 1x Tokimec, ES-160
- Echo sounder : 1x Furuno, FE-700
- Speed log : 1x Furuno, DS-80
- GPS : 1x Furuno, GP-150D
- Chart system : 1x Transas NS 4000
- Autopilot : 1x Sea pilot 75
- VHF : 2x Sailor, RT5022
- Handheld VHF : 2x TR-20
- SSB : 1x Thrane & Thrane 5000
- Inmarsat-C : 2x Sailor, H-2095 C
- Navtex : 1x Furuno, NX-700
- Iridium telephone : 1x Sailor, SC 4000A
- GSM Telephone : 1x Sagem, RT 3000
- AIS : 1x Furuno, FA-150
- Watch Alarm : 1x Marble, 421
- Intercom : Sigma-700
- TV Satellite : 1x Seatel, Coastal 24

Crane Forward AKC 410 HE-2



Crane Aft AKC 410 HE-2



For more information about chartering please contact us
Telephone: +31 (0)78 619 25 07 - Email: chartering@hermansr.com