

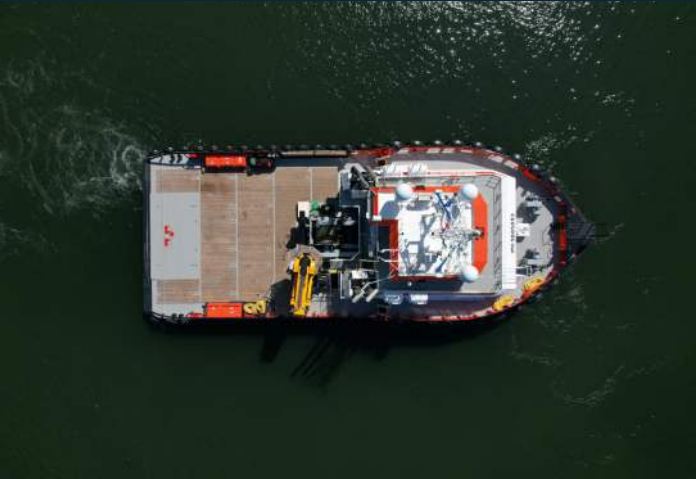


“Brutus”

DP2 - Shoalbuster 3514 - Hybrid

Lindtsedijk 10E
3336 LE Zwijndrecht
The Netherlands

T: +31 (0)78-6192507
E: chartering@hermansr.com



GENERAL

Type : Ultra-shallow Shoalbuster 3514SD DP2 Hybrid
 Basic functions : Towing, anchor handling , dredge support, offshore wind support, oil & gas support
 Classification : Bureau Veritas I 3/3 {E} * Dynapos AM/ AT-R Offshore support, Hull * MACH, Auth UMS, Cleanship, Green passport
 Nat. Authorities : Dutch flag, Unrestricted navigation
 Call sign : PCWL
 I.M.O. No. : 9885893
 MMSI No. : 244711000

DIMENSIONS

Length : 35.55 m
 Width : 14.37 m
 Min draft : 2.45* m
 Max draft : 2.85 m
 GT / NT : 493 GT / 147 NT

TANK CAPACITIES

Fuel oil : 204.00 m³
 Fresh water : 70.00 m³
 Sewage : 20.00 m³
 Grey water : 20.00 m³
 Dirty oil : 4.80 m³
 Lub. oil : 5.80 m³
 Hydraulic oil : 1.50 m³
 Bilge water : 5.80 m³
 Urea (IMO Tier III) : 10.0 m³

PERFORMANCES

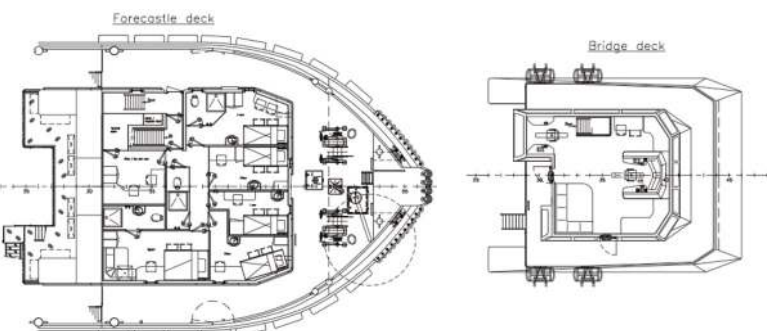
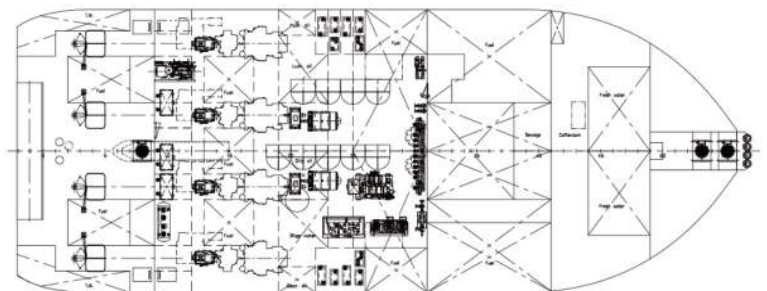
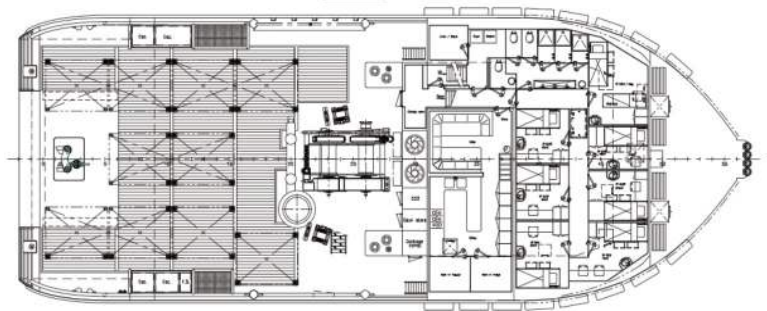
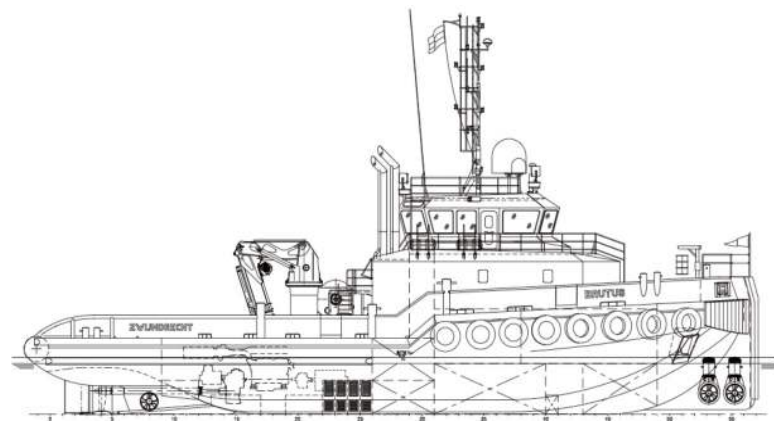
Bollard pull : 61.1 ton (m)
 Max speed : 13.0 knots

PROPULSION SYSTEM

Main engines : 4 x Cat C32 TTA SCAC (IMO Tier III Hybrid)
 Total power : 3876 bkW (5280 bhp) at 1800 rpm
 Gearboxes : 4 x Reintjes WAF 765/7.091:1 Hybrid
 Propulsion : 4 x Promarin fixed pitch propellers
 Diameter : 4 x 1900 mm in v.d. Giessen Optima nozzles
 Bowthruster : 2 x 184 kW/ 250 HP
 Stern thruster : 1 x 184 kW/ 250 HP
 Rudders : 4x fishtail rudders, 60 degrees each side all rudders are independent controllable

Propulsion system is fully diesel electric-hybrid for fuel efficiency

* With approx. 50% tank capacity





"Brutus"

DP2 - Shoalbuster 3514 - Hybrid

Lindtsedijk 10E
3336 LE Zwijndrecht
The Netherlands

T: +31 (0)78-6192507
E: chartering@hermansr.com

ACCOMODATION

Heated and air-conditioned living spaces for 21 persons
3x Single cabin
9x Double cabin (1x hospital)
1x Client office
1x Dedicated survey desk on bridge with 19" rack

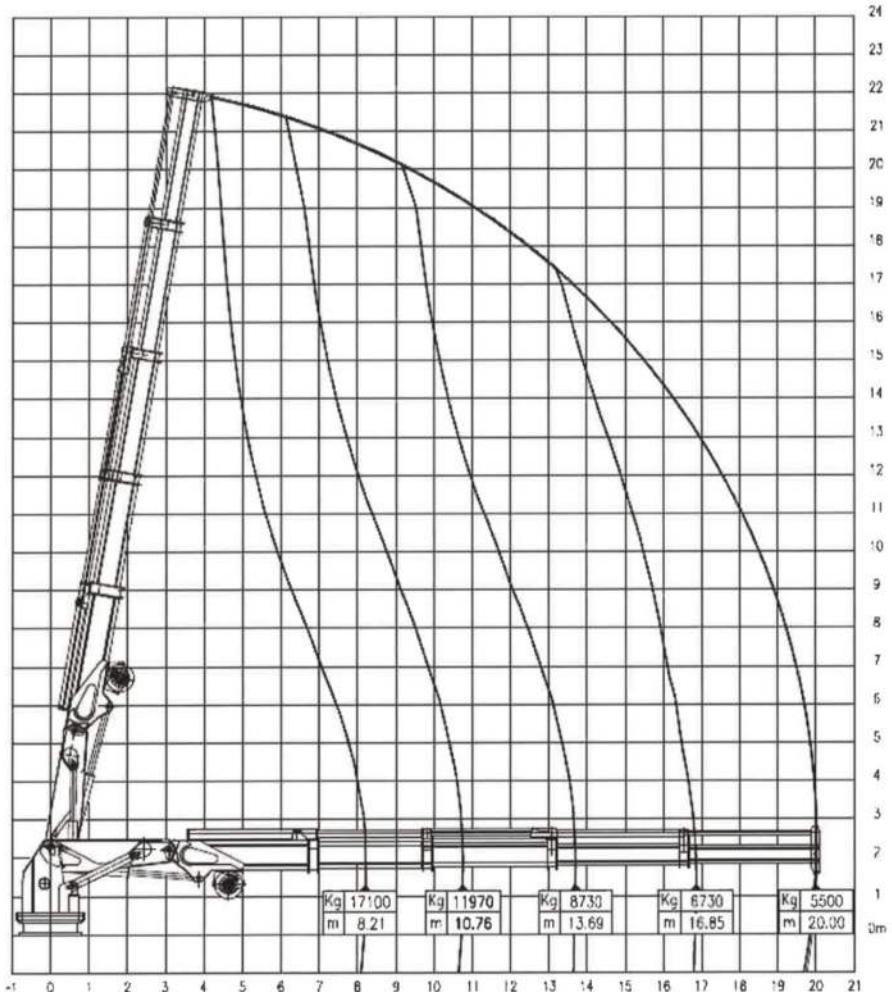
AUXILIARY EQUIPMENT

Generator sets : 1x Cat. C7.1, 147.5 kVA/118 ekW
: 1 x Cat. C9.3, 321.5 kVA/ 250ekW
Fuel separator : 2x Westfalia OTC2 1200l/hr each
Transfer pumps : Water and fuel: SIHI 50 m3/hr at
1,5 bar
Compressors : 2x Alup SCK 9-8 1200 l/min @ 8
bar
Hydraulic set : Electrical driven with two
E-motors 110kW
and one 52kW, 60Hz
Fresh water maker : 3,8 m³/ 24 hrs
Sewage plant : 3 m³ /24 hrs

DECK LAYOUT

Anchors : 2 x 550 kg Pool
Chain : 247.5 m shortlink 24mm
Deck crane : HS Marine AKC 220 LHE4 5,5 T @
20 m (ROV Ready)
Anchorhandling winch: 150 Ton pull - 160 ton Holding
power
Towing winch : 70 Ton pull - 160 ton Holding
power
Tuggerwinch : 2x Dromec 12 ton
Hydraulic pins : 4 hydraulic handling pins
Wire stopper : 1 wire stopper
Maximum deckload : 10 ton/m²
Free deck space : 200 m²
A-frame : option for a 40T hydraulic A-frame
Containers : 4x 20" + 3x 10" in one time
4-point mooring : 2 winches forward/ 2 winches aft
Moon Pool : 800 x 600mm integrated in hull
Stern roller : 6,75 m wide, 100T SWL

Aft Crane AKC 220 LHE4



NAUTICAL AND COMMUNICATION EQUIPMENT

According GMDSS : Area A3
Searchlights : 3 x 250 W LED Den Haan
Compass : 1 x Cassens & Plat, Reflecta 1
Radar system : 2x Furuno FAR-1518BB
DPS : 2x Kongsberg DPS 110 & 112
ECDIS : 2x Furuno FMD3100
V-Sat : 2x Intellian V85X
TV Satellite : 1x Intellian T100W
Gyro compass : 3 x Anschuetz compact 22
Autopilot : 1x Simrad AP-70
Echosounder : 1x Furuno FE 800
Dynamic positioning : Kongsberg DP2 system
Motion reference unit: 2x Kongsberg MRU-2
Laser reference : 1x Kongsberg SpotTrack
Navtex : 1x Furuno NX-700A
AIS : 1x Furuno FA 170
SSB : 1x Furuno FS-1570 , 150 W.
Inmarsart C : 2x Thrane & Thrane sailor 6110
VHF Radio : 3x Sailor RT6222
Wind sensor : 3x Kongsberg Gill Ultrasonic

For more information about chartering please contact us
Telephone: +31 (0)78 619 25 07 - Email: chartering@hermansr.com