



“Barney” Shoalbuster 3013

Lindtsedijk 10E
3336 LE Zwijndrecht
The Netherlands

T: +31 (0)78-6192507
E: chartering@hermansr.com



GENERAL

Type : Shoalbuster 3013
Basic functions : Towing, Anchor handling, Dredge support, Supply, Survey, Windfarm support, Diving support, 4-point mooring system, pull vessel
Classification : Bureau Veritas I * HULL • Tug Unrestricted navigation, anchorhandling notation
Callsign : PCZU
IMO No. : 9740938
MMSI No. : 244850156

DIMENSIONS

Length : 30.02 m
Width : 13.46 m
Depth at half length : 3.20 m
Draft min. : 1.80 m
Draft max. : 2.30 m
GT/NT : 382 GT/ 114 NT

TANK CAPACITIES

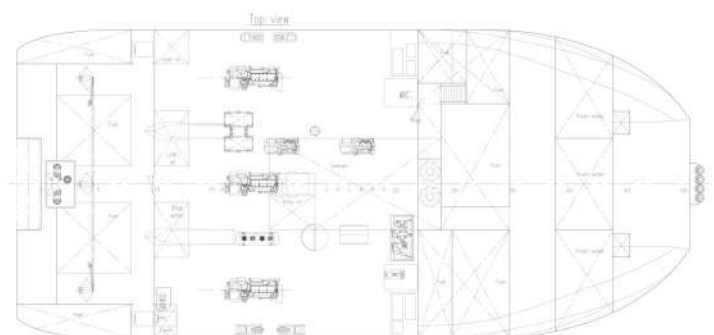
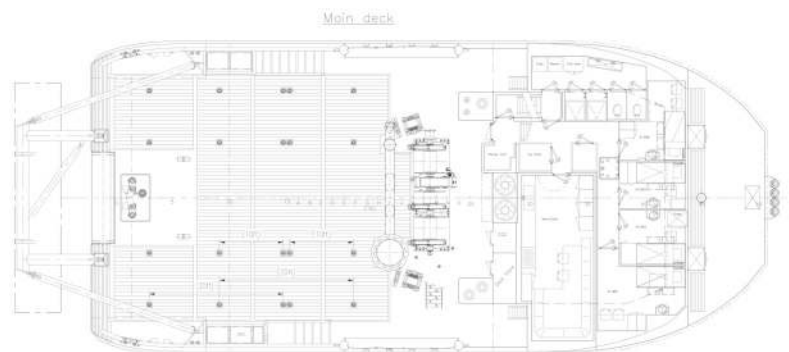
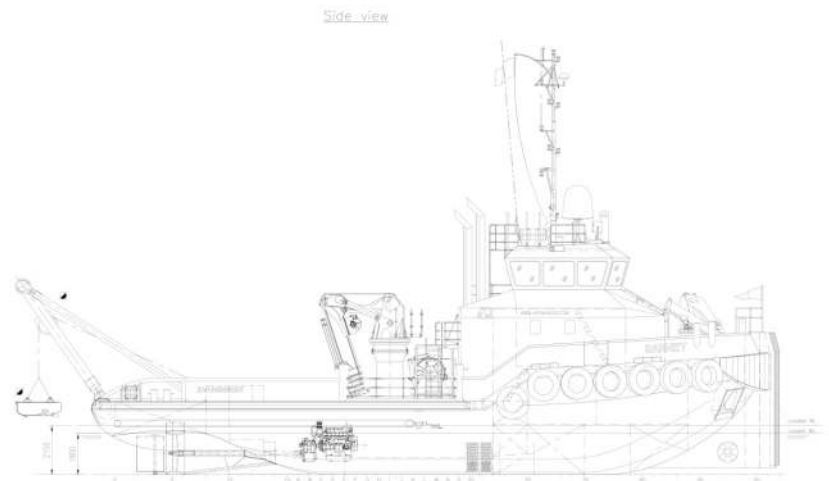
Fuel oil : 135.00 m³
Fresh water : 56.00 m³
Sewage : 18.70 m³
Dirty oil : 2.30 m³
Lub. oil : 3.40 m³
Hydraulic oil : 2.00 m³
Gearbox oil : 0.50 m³
Bilge Water : 3.40 m³

PERFORMANCES

Bollard pull : 30 tons (m)
Speed : 10.5 knots

PROPULSION SYSTEM

Main engines : 3x Caterpillar C18 ACERT
Total power : 1599 bkW (2145 bhp) @ 1825 rpm
Gearboxes : 3x Reintjes WAF 364L / 5,435:1
Propulsion : 3x Promarin fixed pitch propeller
Diameter : 3x 1600 mm in nozzles
Bowthruster : 250 bhp, hydraulically driven
Rudders : 3x Fishtail rudders, 45 degrees





“Barney” Shoalbuster 3013

Lindtsedijk 10E
3336 LE Zwijndrecht
The Netherlands
T: +31 (0)78-6192507
E: chartering@hermansr.com

AUXILIARY EQUIPMENT

- Generator sets : 2x Cat C-4.4 TA 107 kVA, 50 Hz
230/400V
- Hydraulic set : Combined Cat C18 with Gearbox with
clutch
- Fuel seperator : 1x Alfa Laval Mib 303
- Compressors : 1x Capacity 950 L / Min 2x 175 L / min
- Transfer pumps : 1x water 1x fuel : SIHI 32 m³/hr at 3.5
bar
- Sewage Treatment : 1x Hamman Super mini cap. 12 persons

DECK LAYOUT

- Anchors : 2x 340 kg Pool (HHP)
- Chain : 19 mm short-link anchor chain 220m
- Anchor winch : 2x DMT hydraulically driven, 2x drum
with pull 5.5 Ton @ 1st layer, wire 300m,
Ø 24mm
- Deck crane aft : HS Marine AKC 185 HE4, 6440kg @
17.07m
- Deck crane front : HS Marine AK 20 LE1, 2055kg @ 7.28m
- Winches : 3 drums from 50 tons each of which 2
towing winches with 650m @ 38mm each
anchor handling 1x 150m @ Ø44mm,
speed 6m/min 75 ton BHF
- Towing pins : 4x Hydraulic anchorhandling pins
- Wire/ chain stopper : 1x wire / chain stopper 50T SWL
- Tugger winch : 2x Dromec HPV-12000 12T @ 12m/min
- Moonpool : 1x moonpool with a diameter of 386mm
: 1x moonpool 600 x 800 mm
- Maximum deckload : 10 ton /m²
- Free deck space : 150 m²
- A-frame : Available 25T SWL
- Plough : Several ploughs available
- Container capacity : 3x 20" and 3x10"

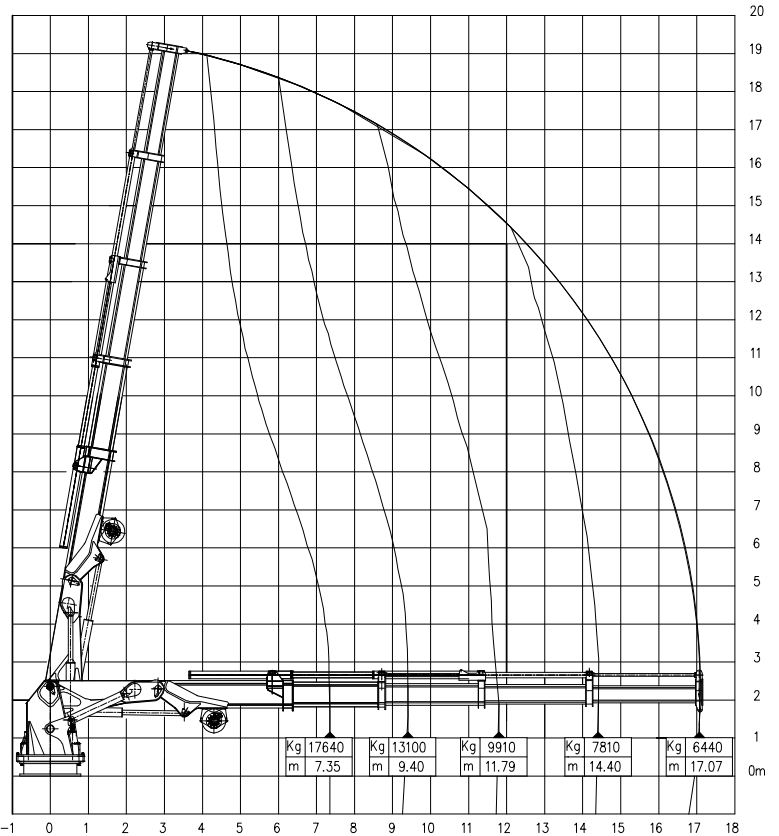
ACCOMODATION

Heated and air-conditioned living spaces for 12 persons, consisting of a captain's cabin, 1 single crew cabin and 2 double crew cabins, 3 double passenger cabins, a galley / mess and sanitary facilities.

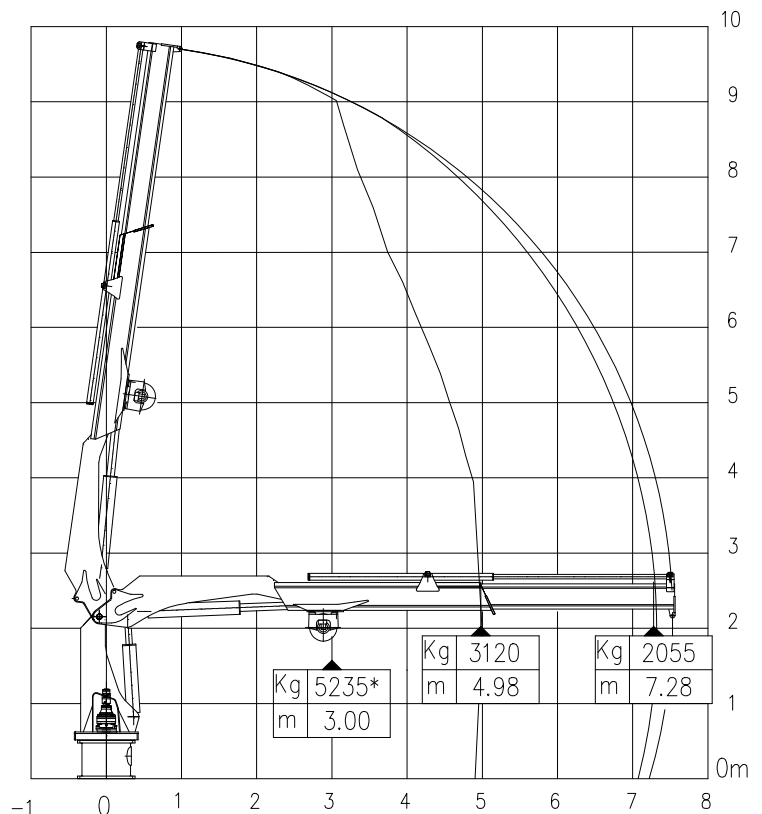
NAUTICAL AND COMMUNICATION EQUIPMENT

- According GMDSS : Area A3
- Searchlights : 2x Pesch 3000 W
- Gyro compass : 1x Anschuetz Std 22 Compact
- Radar system : 1x Furuno FAR-2117
- D-GPS : 1x Simrad MX 521-A
- AIS : 1x Furuno FA-150
- ECDIS : 2x Furuno ECDIS
- Autopilot : 1x Simrad FU-80
- Echosounder : 1x Furuno FE 700
- Watch alarm : 1x Furuno BR-540
- VHF radio telephone : 3x sailor RT 6222 25W
- Navtex : 1x Furuno NX 700
- SSB/DSC : 1x Sailor 6310
- Inmarsat-C : 2x Sailor 6110
- Satellite : 1x Iridium telephone
- Vsat : 1x Intellian VSAT v100GX
- CCTV : 1x Orlaco 8 Cameras system

Aft Crane AKC 185 LHE4



Forward Crane AK 20 LE1



For more information about chartering please contact us
Telephone: +31 (0)78 619 25 07 - Email: chartering@hermansr.com