



# "Auxilia" Multicat 3515

Lindtsedijk 10E  
3336 LE Zwijndrecht  
The Netherlands

T: +31 (0)78-6192507  
E: chartering@hermansr.com



## GENERAL

Yard no. : Damen Shipyards 571793  
 Delivery date : August 2019  
 Basic functions : Towing, Anchor handling, Dredge support, Supply, Survey, Wind farm support  
 Classification : Bureau Veritas I \* Hull offshore support vessel, Tug, anchor handling vessel \* MACH, AUT-UMS, green passport, clean ship  
 Nat. Authorities : Dutch shipping inspection, Unrestricted service  
 Flag : Dutch  
 Callsign : PBPW  
 IMO No. : 9855537  
 MMSI No. : 244650204

## DIMENSIONS

Length : 34.65 m  
 Width : 14.50 m  
 Min draft : 2.80 m  
 Max draft : 3.15 m  
 GT/ NT : 497 GT/ 148 NT

## TANK CAPACITIES

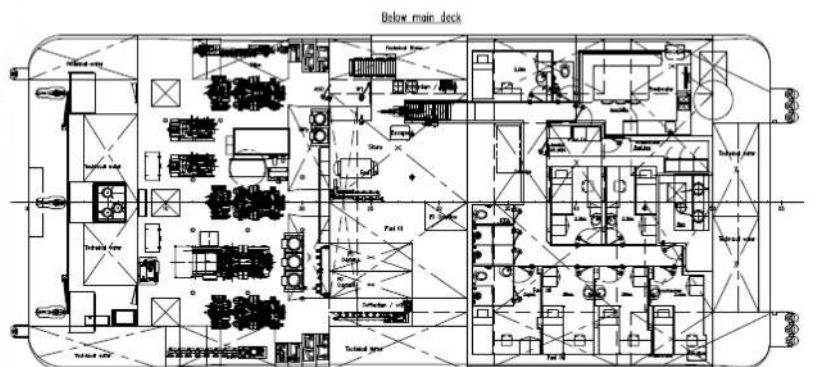
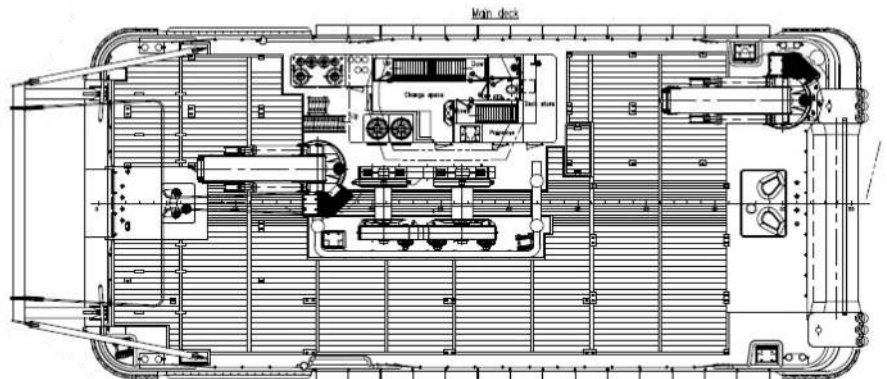
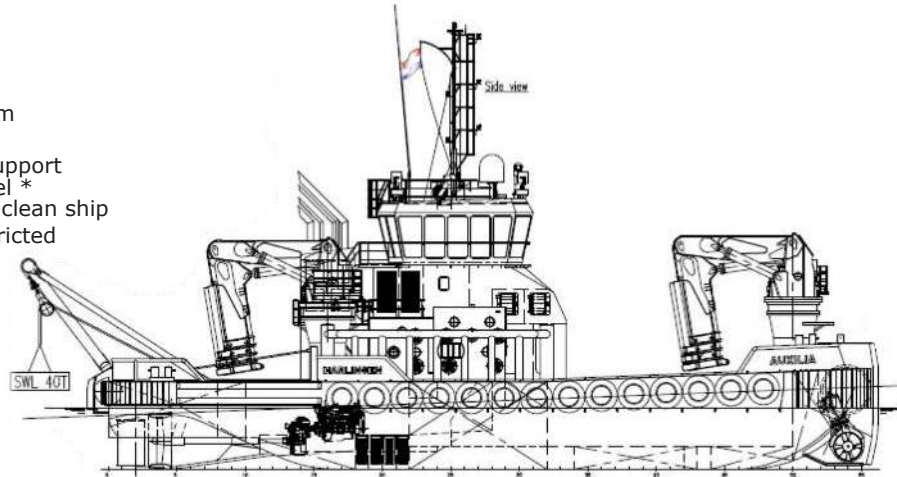
Fuel oil : 178.0 m<sup>3</sup>  
 Fresh water : 37.0 m<sup>3</sup>  
 Sewage : 8.8 m<sup>3</sup>  
 Dirty oil : 5.1 m<sup>3</sup>  
 Lub. oil : 5.8 m<sup>3</sup>  
 Hydraulic oil : 5.1 m<sup>3</sup>  
 Bilge water : 5.9 m<sup>3</sup>  
 Technical water : 170.0 m<sup>3</sup>

## PERFORMANCES

Bollard pull : 50.8 ton (m)  
 Speed : 11.0 knots

## PROPULSION SYSTEM

Main engines : 3x Caterpillar C32 TTA  
 Total power : 2910 kW (3902 bhp) at 1800 rpm  
 Gear boxes : 3x Reintjes WAF 675, 7.091:1  
 Propulsion : 3x Promarin fixed propellers  
 Diameter props : 2000 mm  
 Bow thruster : Electrical driven 400 kW (540 bhp)  
 Rudders : 3x Fishtail rudders





# "Auxilia" Multicat 3515

Lindtsedijk 10E  
3336 LE Zwijndrecht  
The Netherlands

T: +31 (0)78-6192507  
E: chartering@hermansr.com

## AUXILIARY EQUIPMENT

- Generator sets : 2x Caterpillar C7.1 187.5 kVA / 150 ekW
- : 1 Caterpillar C32 TTA 1037.5 kVA / 830 ekW
- Hydraulic power : 3x Electrical E-motor @ 178 kW
- : 2x Electrical E-motor @ 75 kW
- Fuel oil separator : Westfalia OCT 2
- Air compressor : Alup SCK 30-10 scr + air dryer

## DECK LAYOUT

- Anchor : 1x 430 kg Pool TW (HHP)
- Chain : 24mm stud-link anchor chain 275m
- Anchor winch : Kraaijeveld, hydraulic driven
- Deck cranes : 2x HS Marine AKC 850/18 HE3
- : 55.0 ton @ 10.35m & 28 ton @ 18.50m
- Anchor handling winch : Kraaijeveld KA-30/4-H-TR (1000m, Ø 64mm)
- Capacity : 200 ton @ 6.6m/min pulling force (1<sup>st</sup> layer)
- : 125 ton @ 10.5 m/min pulling force (1<sup>st</sup> layer)
- : 46 ton @ 28.0 m/min pulling force (1<sup>st</sup> layer)
- : 250 ton brake holding force (1<sup>st</sup> layer)
- Towing winch : Kraaijeveld KA-20/2-H-TR (1000m, Ø 48mm)
- Capacity : 100 ton @ 8.5m/min pulling force (1<sup>st</sup> layer)
- : 45 ton @ 16 m/min pulling force (1<sup>st</sup> layer)
- : 200 ton brake holding force (1<sup>st</sup> layer)
- Tugger winch : 2x Dromec HPV2000 12 ton @ 4.5 m/min
- Free deck space : 275 m<sup>2</sup>
- Maximum deck-load : 15 ton/m<sup>2</sup>
- Container capacity : 11x 20" in one time
- Towing pins fore : Fore WK hydraulics four pins in a row type
- Towing pins aft : WK hydraulics triple pin type + chain stopper
- A-frame : 40 ton SWL with two hoisting points

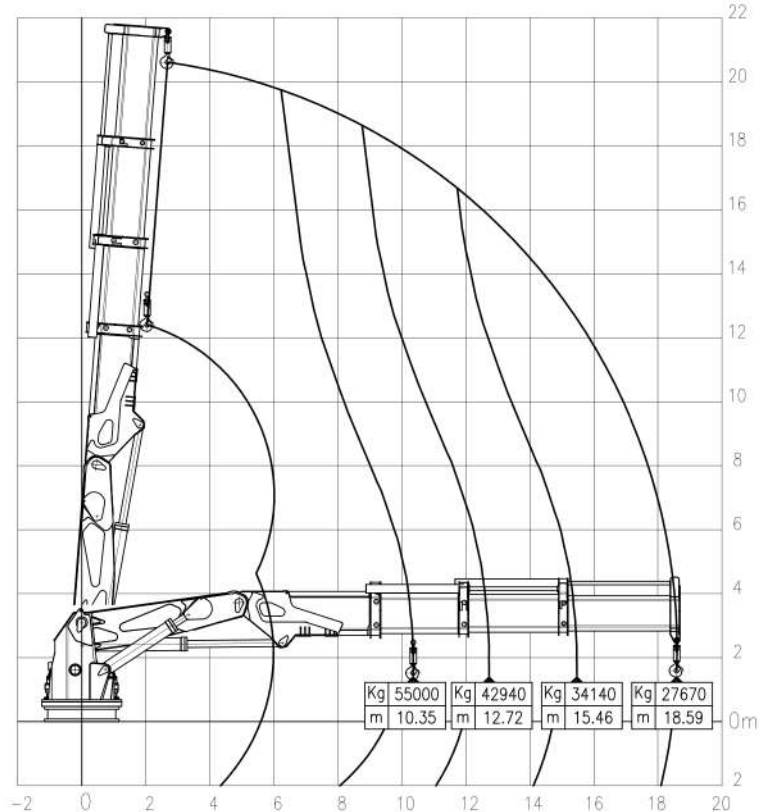
## ACCOMMODATION

Heated and air conditioned living spaces for 12 persons, consisting of a captain's cabin, one officers cabin, five double crew cabins, a galley, laundry room, store room and sanitary facilities.

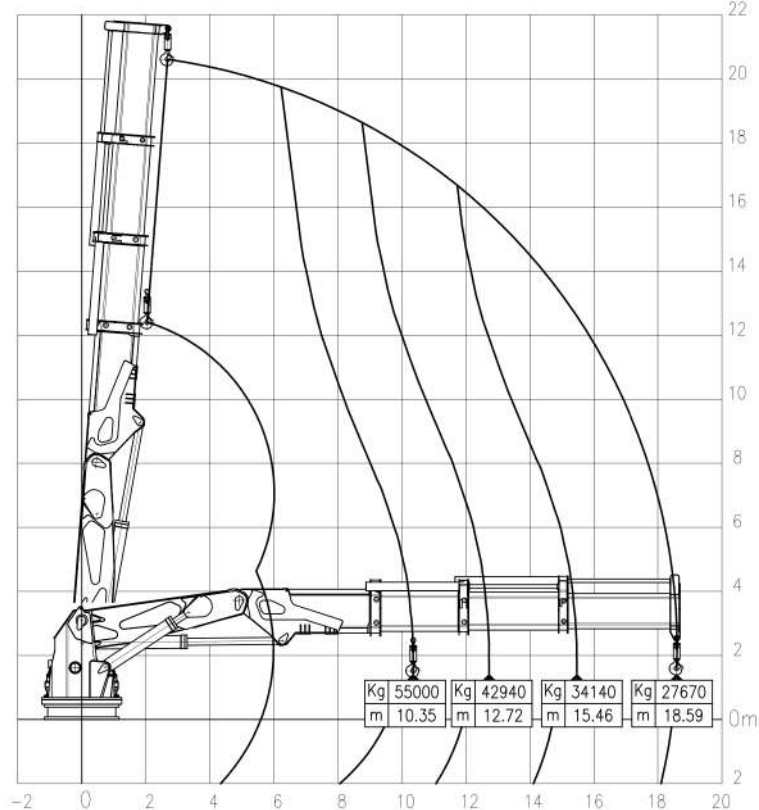
## NAUTICAL AND COMMUNICATION EQUIPMENT

- According GMDSS : Area A4
- Search lights : 2x Pesch 2000 W
- Radar system : 1x Furuno, FAR 1518BB
- : 1x Furuno FAR 8065
- Compass : 1x Cassens & Plat, Reflecta 1
- Gyro compass : 1x Anschutz Fiber Optic STD30 MF
- Echo sounder : 1x Furuno, FE-800
- Speed log : 1x Skipper EML-224
- GPS/ Gyro : 1x Furuno SC-70
- ECDIS : 2x Furuno FMD3100 class approved
- Autopilot : 1x Sea pilot 76
- VHF : 2x Sailor, RT6222
- Handheld VHF : 2x TR-30
- SSB : 1x Sailor 6310
- Inmarsat-C : 2x Thrane & Thrane Sailor 6018
- Navtex : 1x Furuno, NX-700
- VSAT : 1x Cobham Sailor 800
- GSM Telephone : 1x Sagem, RT 3000
- AIS : 1x Furuno, FA-150
- Watch Alarm : 1x Furuno BR-500
- Intercom : 1x Phonotech CIS-3101
- TV Satellite : 1x Seatel 80 TV

## AKC 850/18 HE3



## AKC 850/18 HE3



For more information about chartering please contact us  
Telephone: +31 (0)78 619 25 07 - Email: chartering@hermansr.com