



# "Nero" Multicat 3013

Ebweg 56  
2991 LT Barendrecht  
The Netherlands  
T: +31 (0)78-6192507  
E: chartering@hermansr.com  
I: www.hermansr.com



## GENERAL

Yard no. : 571678 (Damen Shipyards  
Hardinxveld)  
Delivery date : 2013  
Type : Multicat 3013  
Basic functions : Towing, Anchor handling, Dredge  
support, Supply, Survey, Wind farm  
support  
Classification : Bureau Veritas I \* Tug Unrestricted  
navigation \* MACH, AUT-UMS  
Nat. Authorities : Dutch Shipping Inspection  
Unrestricted service  
Callsign : PCTM  
IMO No. : 9641481  
MMSI No. : 246925000

## DIMENSIONS

Length O.A : 29.90 m  
Width O.A : 13.50 m  
Min draft : 2.60 m  
Max draft : 2.70 m  
GT/ NT : 341 GT/ 102 NT

## TANK CAPACITIES

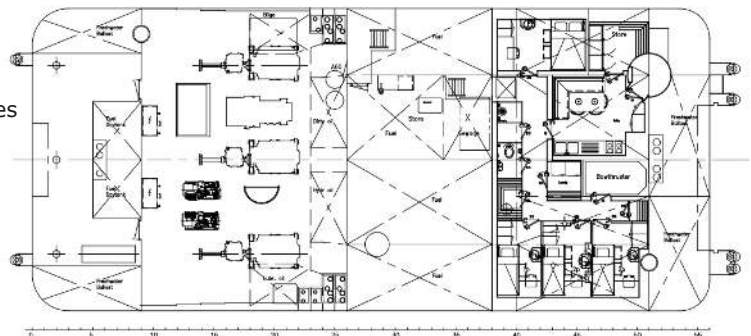
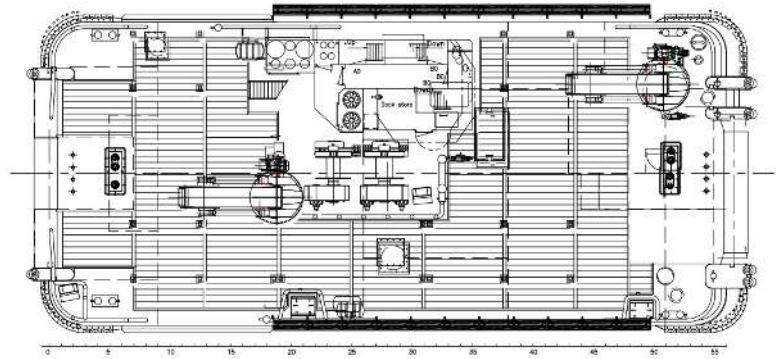
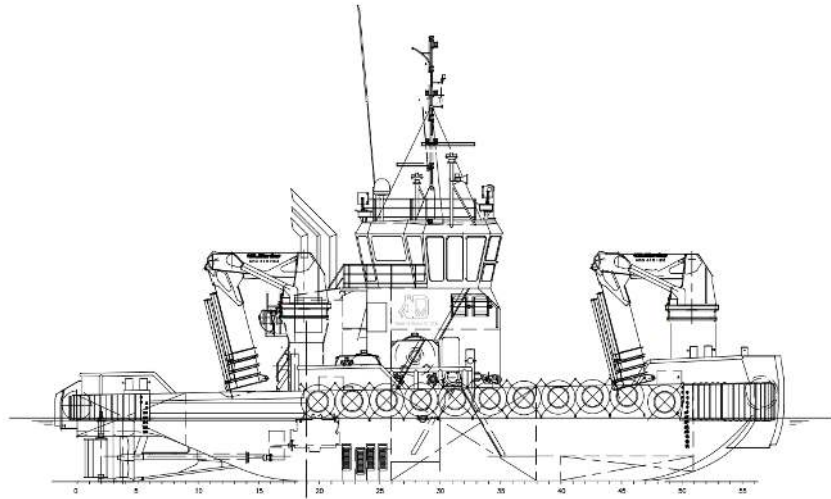
Fuel oil : 208.5 m<sup>3</sup>  
Fresh water : 53.5 m<sup>3</sup>  
Sewage : 6.8 m<sup>3</sup>  
Dirty oil : 4.4 m<sup>3</sup>  
Lub. oil : 2.8 m<sup>3</sup>  
Hydraulic oil : 4.4 m<sup>3</sup>  
Bilge water : 2.8 m<sup>3</sup>

## PERFORMANCES

Bollard pull : 39 ton (m)  
Speed : 10.8 knots

## PROPULSION SYSTEM

Main engines : 3x Caterpillar C32 TTA  
Total power : 2117 bkW (2879 bhp) at 1600 rpm  
Gear boxes : 3x Reintjes WAF 562 5.947:1  
Propulsion : 3x Promarin fixed propellers in Optima nozzles  
Diameter props : 1700 mm  
Bow thruster : Hydraulic driven 200 kW (272 bhp) 360°  
Rudders : 3x Fishtail rudders





# "Nero" Multicat 3013

Ebweg 56  
2991 LT Barendrecht  
The Netherlands  
T: +31 (0)78-6192507  
E: chartering@hermansr.com  
I: www.hermansr.com

## AUXILIARY EQUIPMENT

Generator sets : 2x Caterpillar C4.4  
Hydraulic power : Caterpillar C32 TTA  
Fuel oil separator : Alfa Laval MIB 303  
Air compressor : Alup SCK 30-10 scr

## DECK LAYOUT

Anchor : 1x 360 kg Pool TW (HHP) + 1x spare  
Chain : 19mm stud-link anchor chain 275m  
Anchor winch : Ridderinkhof, hydraulic driver  
Deck cranes : 2x HS Marine AKC 410 18 HE3  
49.1 ton @ 5.74m & 13.5 ton @18.00m  
Anchor handling winch: Kraaijeveld KA-30/3-H-TR  
Capacity : 150 ton at 8m/min pulling force (1<sup>st</sup> layer)  
30 ton at 32 m/min pulling force (1<sup>st</sup> layer)  
170 ton brake holding force (1<sup>st</sup> layer)  
Towing winch : Kraaijeveld KA-20-H-TR  
Capacity : 40 ton at 12m/min pulling force (1<sup>st</sup> layer)  
12 ton at 24 m/min pulling force (1<sup>st</sup> layer)  
100 ton brake holding force (1<sup>st</sup> layer)  
Towing hook : 2x Mampaey 20 ton SWL  
Tugger winches : 2x Dromec 12 ton at 4.5 m/min  
Free deck space : 180 m<sup>2</sup>  
Maximum deck-load : 15 ton/m<sup>2</sup>  
Container capacity : 5x 20" + 2x 10" in one time  
Towing pins : Fore WK hydraulics four pins in a row type  
Aft WK hydraulics triple pin type

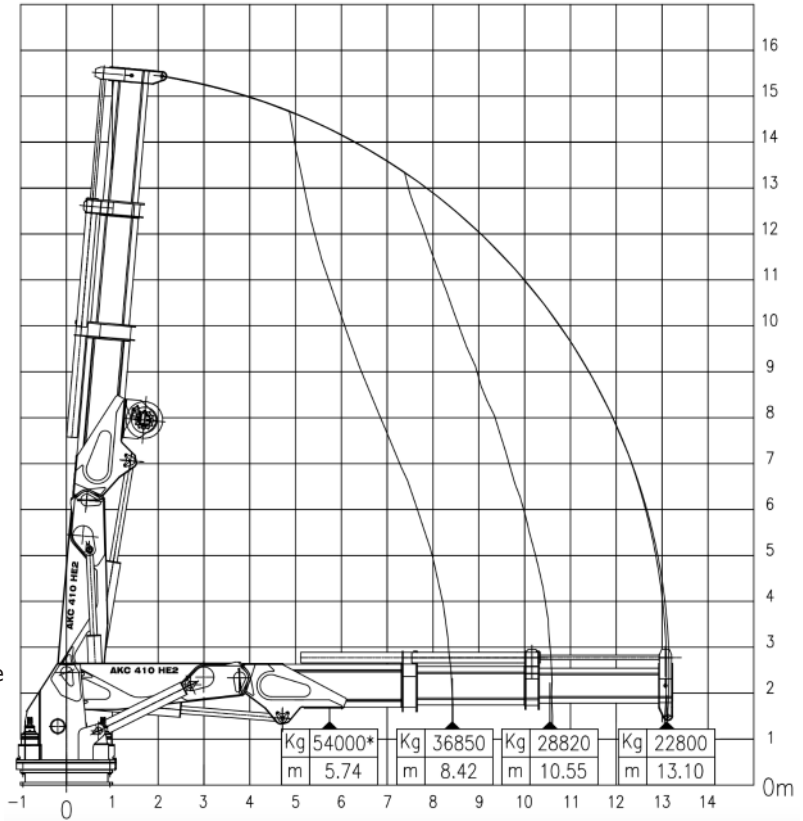
## ACCOMMODATION

Heated and air conditioned living spaces for six persons, consisting of a captain's cabin, one single crew cabin, two double crew cabins, a galley and sanitary facilities.

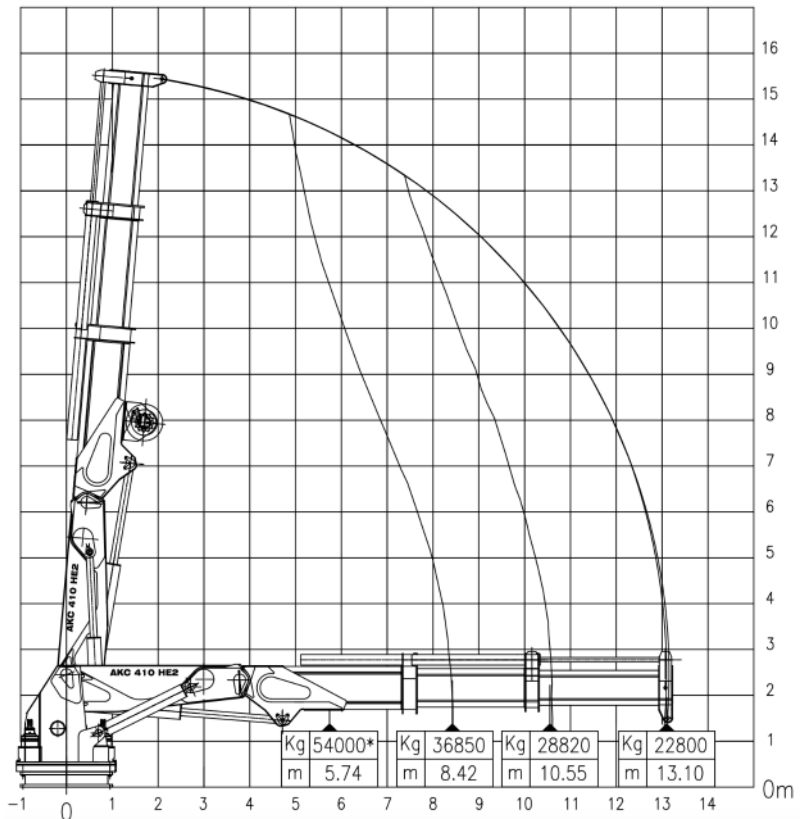
## NAUTICAL AND COMMUNICATION EQUIPMENT

According GMDSS : Area A3  
Search lights : 2x Pesch 2000 W  
Radar system : 1x Furuno, FAR 2117  
1x Furuno FR8062  
Compass : 1x Cassens & Plat, Reflecta 1  
Gyro compass : 1x Tokimec, ES-160  
Echo sounder : 1x Furuno, FE-700  
Speed log : 1x Furuno, DS-80  
GPS : 1x Furuno, GP-150D  
Chart system : 1x Transas NS 4000  
Autopilot : 1x Sea pilot 75  
VHF : 2x Sailor, RT6222  
Handheld VHF : 2x TR-20  
SSB : 1x Furuno FS1570  
Inmarsat-C : 2x Thrane & Thrane Sailor 6110  
Navtex : 1x Furuno, NX-700  
Iridium telephone : 1x Sailor, SC 4000A  
GSM Telephone : 1x Sagem, RT 3000  
AIS : 1x Furuno, FA-150  
Watch Alarm : 1x Marble, 421  
Intercom : Sigma-700  
TV Satellite : 1x Seatel, Coastal 24

## Crane Forward AKC 410 18 HE-3



## Crane Aft AKC 410 18 HE-3



For more information about chartering please contact us  
Telephone: +31 (0)78 619 25 07 - Email: chartering@hermansr.com