



"Nero" Multicat 3013

Ebweg 56
2991 LT Barendrecht
The Netherlands
T: +31 (0)78-6192507
E: chartering@hermansr.com
I: www.hermansr.com



GENERAL

Yard no. : 571678 (Damen Shipyards Hardinxveld)
Delivery date : 2013
Type : Multicat 3013
Basic functions : Towing, Anchor handling, Dredge support, Supply, Survey, Wind farm support
Classification : Bureau Veritas I * Tug Unrestricted navigation * MACH, AUT-UMS
Nat. Authorities : Dutch Shipping Inspection Unrestricted service
Callsign : PCTM
IMO No. : 9641481
MMSI No. : 246925000

DIMENSIONS

Length : 30.14 m
Width : 12.50 m
Min draft : 2.40 m
Max draft : 2.60 m
GT/ NT :

TANK CAPACITIES

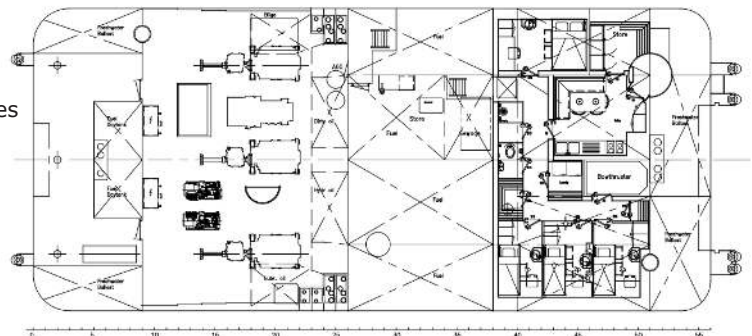
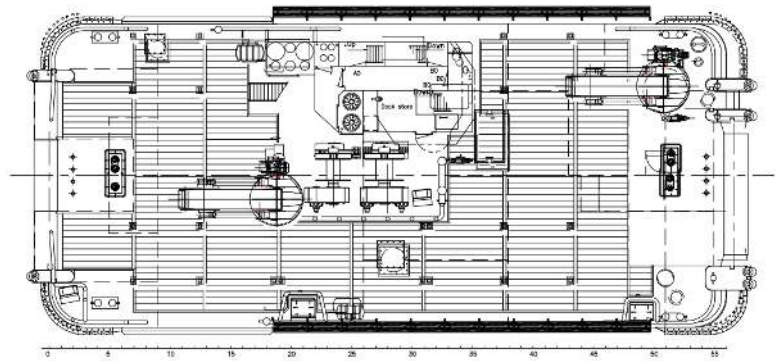
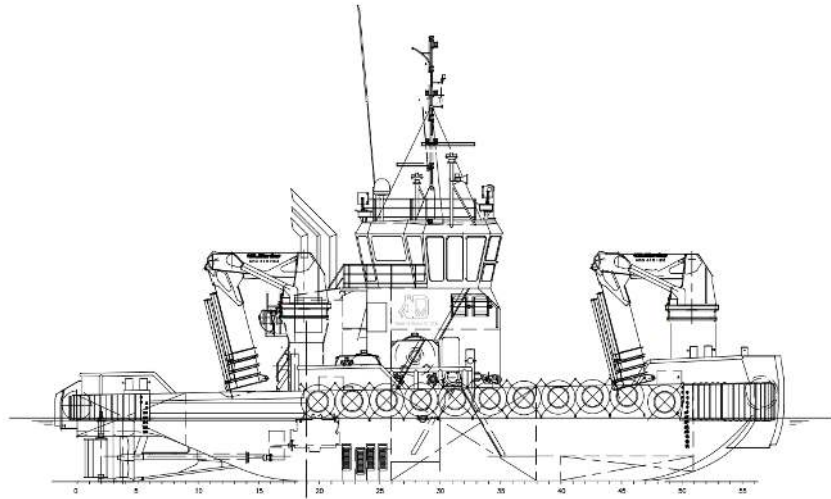
Fuel oil : 208.5 m³
Fresh water : 53.5 m³
Sewage : 6.8 m³
Dirty oil : 4.4 m³
Lub. oil : 2.8 m³
Hydraulic oil : 4.4 m³
Bilge water : 2.8 m³

PERFORMANCES

Bollard pull : 39 ton (m)
Speed : 10.8 knots

PROPULSION SYSTEM

Main engines : 3x Caterpillar C32 TTA
Total power : 2117 bkW (2879 bhp) at 1600 rpm
Gear boxes : 3x Reintjes WAF 562 5.947:1
Propulsion : 3x Promarin fixed propellers in Optima nozzles
Diameter props : 1700 mm
Bow thruster : Hydraulic driven 200 kW (272 bhp) 360°
Rudders : 3x Fishtail rudders





"Nero" Multicat 3013

Ebweg 56
2991 LT Barendrecht
The Netherlands
T: +31 (0)78-6192507
E: chartering@hermansr.com
I: www.hermansr.com

AUXILIARY EQUIPMENT

Generator sets : 2x Caterpillar C4.4
Hydraulic power : Caterpillar C32 TTA
Fuel oil separator : Alfa Laval MIB 303
Air compressor : Alup SCK 30-10 scr

DECK LAYOUT

Anchor : 1x 360 kg Pool TW (HHP) + 1x spare
Chain : 19mm stud-link anchor chain 275m
Anchor winch : Ridderinkhof, hydraulic driver
Deck cranes : 2x HS Marine AKC 410 18 HE3
49.1 ton @ 5.74m & 13.5 ton @18.00m
Anchor handling winch: Kraaijeveld KA-30/3-H-TR
Capacity : 150 ton at 8m/min pulling force (1st layer)
30 ton at 32 m/min pulling force (1st layer)
170 ton brake holding force (1st layer)
Towing winch : Kraaijeveld KA-20-H-TR
Capacity : 40 ton at 12m/min pulling force (1st layer)
12 ton at 24 m/min pulling force (1st layer)
100 ton brake holding force (1st layer)
Towing hook : 2x Mampaey 20 ton SWL
Tugger winches : 2x Dromec 12 ton at 4.5 m/min
Free deck space : 180 m²
Maximum deck-load : 10 ton/m²
Container capacity : 5x 20" + 2x 10" in one time
Towing pins : Fore WK hydraulics four pins in a row type
Aft WK hydraulics triple pin type

ACCOMMODATION

Heated and air conditioned living spaces for six persons, consisting of a captain's cabin, one single crew cabin, two double crew cabins, a galley and sanitary facilities.

NAUTICAL AND COMMUNICATION EQUIPMENT

According GMDSS : Area A3
Search lights : 2x Pesch 2000 W
Radar system : 1x Furuno, FAR 2117
1x Furuno FR8062
Compass : 1x Cassens & Plat, Reflecta 1
Gyro compass : 1x Tokimec, ES-160
Echo sounder : 1x Furuno, FE-700
Speed log : 1x Furuno, DS-80
GPS : 1x Furuno, GP-150D
Chart system : 1x Transas NS 4000
Autopilot : 1x Sea pilot 75
VHF : 2x Sailor, RT6222
Handheld VHF : 2x TR-20
SSB : 1x Furuno FS1570
Inmarsat-C : 2x Thrane & Thrane Sailor 6110
Navtex : 1x Furuno, NX-700
Iridium telephone : 1x Sailor, SC 4000A
GSM Telephone : 1x Sagem, RT 3000
AIS : 1x Furuno, FA-150
Watch Alarm : 1x Marble, 421
Intercom : Sigma-700
TV Satellite : 1x Seatel, Coastal 24

For more information about chartering please contact us
Telephone: +31 (0)78 619 25 07 - Email: chartering@hermansr.com