



# "Panda" Multicat 2712

Ebweg 56  
2991LT Barendrecht  
The Netherlands  
T: +31 (0)78-6192507  
E: chartering@hermansr.com  
I: www.hermansr.com



### GENERAL

Delivery date : March 2017  
 Type : Damen Multicat 2712  
 Basic functions : Towing, anchor handling , dredge support, offshore wind support, oil & gas support  
 Classification : Bureau Veritas I 3/3 {E} \* Tug Unrestricted Area \* MACH  
 Call sign : PCOA  
 I.M.O. No. : 9807798  
 MMSI No. : 245852000

### DIMENSIONS

Length : 27.70 m  
 Width : 11.45 m  
 Depth at sides : 3.90 m  
 Max Draught : 2.85 m  
 GT / NT : 299 GT / 76 NT

### TANK CAPACITIES

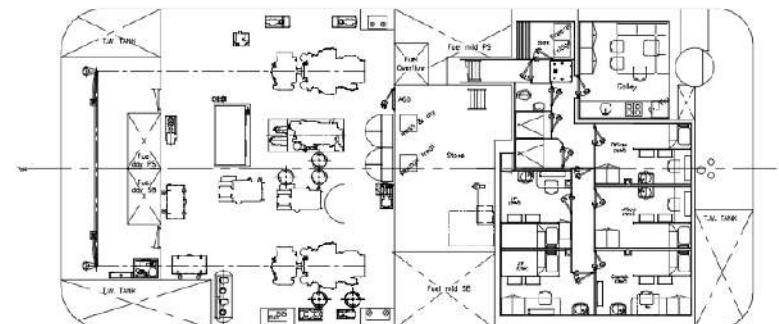
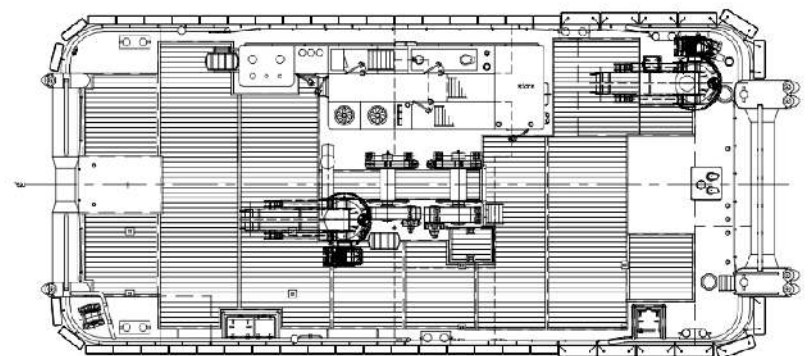
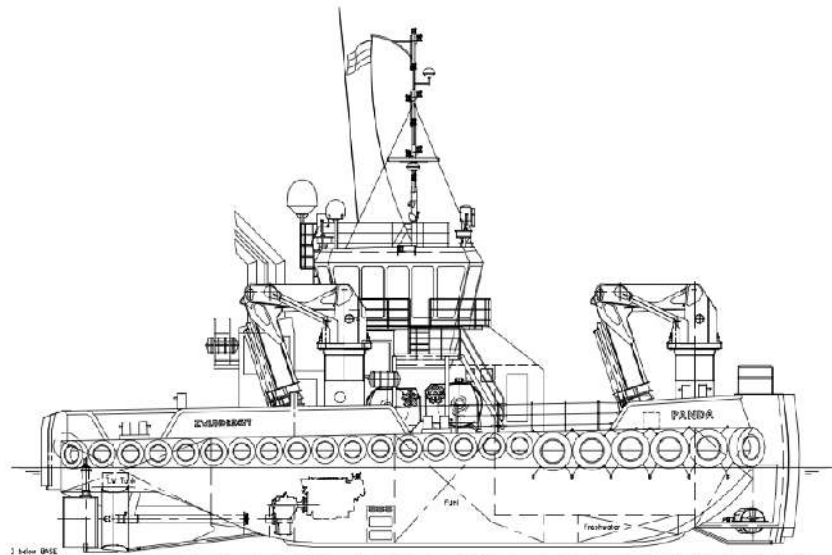
Fuel oil : 110.00 m<sup>3</sup>  
 Fresh water : 31.30 m<sup>3</sup>  
 Sewage : 10.50 m<sup>2</sup>  
 Dirty oil : 1.70 m<sup>2</sup>  
 Lub. oil : 1.50 m<sup>3</sup>  
 Hydraulic oil : 2.30 m<sup>3</sup>  
 Bilge water : 4.10 m<sup>3</sup>

### PERFORMANCES

Bollard pull : 33.0 ton (m)  
 Speed : 10.0 knots

### PROPULSION SYSTEM

Main engines : 2 x Caterpillar C32 TTA ACERT  
 Total power : 1790 bkW (2435 bhp) at 1800 rpm  
 Gearboxes : 2 x Reintjes WAF 572L/7.091:1  
 Propulsion : 2 x Promarin fixed pitch propellers  
 Diameter : 2 x 1900 mm in v.d. Giessen Optima nozzles  
 Bowthruster : 1 x 184 Kw  
 Rudders : 2x fishtail rudders, 45 degrees





# "Panda" Multicat 2712

Ebweg 56  
2991LT Barendrecht  
The Netherlands  
T: +31 (0)78-6192507  
E: chartering@hermansr.com  
I: www.hermansr.com

## AUXILIARY EQUIPMENT

- Generator sets : 2x Cat. C 04.4, 107 kVA each
- Hydraulic set : 1 x Caterpillar C 12, 339 KW
- Fuel separator : Facet MV-11-AG
- Transfer pumps : for water and fuel: SIHI 50 m3/hr at 1,5 bar
- Compressors : 1x ABAC compressors @ 150L/min  
1x Alup SCK 9-8 @ 1200L/min

## DECK LAYOUT

- Anchors : 2 x 300 kg Pool
- Chain : 192.5 m shortlink 17,5 mm
- Deck crane fore ship : HS Marine AKC 290 LHE3 11,5 T @ 16,5 m
- Deck crane aft ship : HS Marine AKC 290 LHE3 11,5 T @ 16,5 m
- Forward winch : 100 Ton pull - 150 ton Holding power
- Aft winch : 50 Ton pull - 100 ton Holding power
- Tuggerwinch : Dromec 12 ton
- Hydraulic pins : 1 set of anchorhandling pins Wire stopper : 1x wire stopper
- Maximum deckload : 10 ton/m<sup>2</sup>
- Free deck space : 150 m<sup>2</sup>
- A-Frame : 25T SWL
- Plough : Available
- Container capacity : 4x 20" and 2x 10"

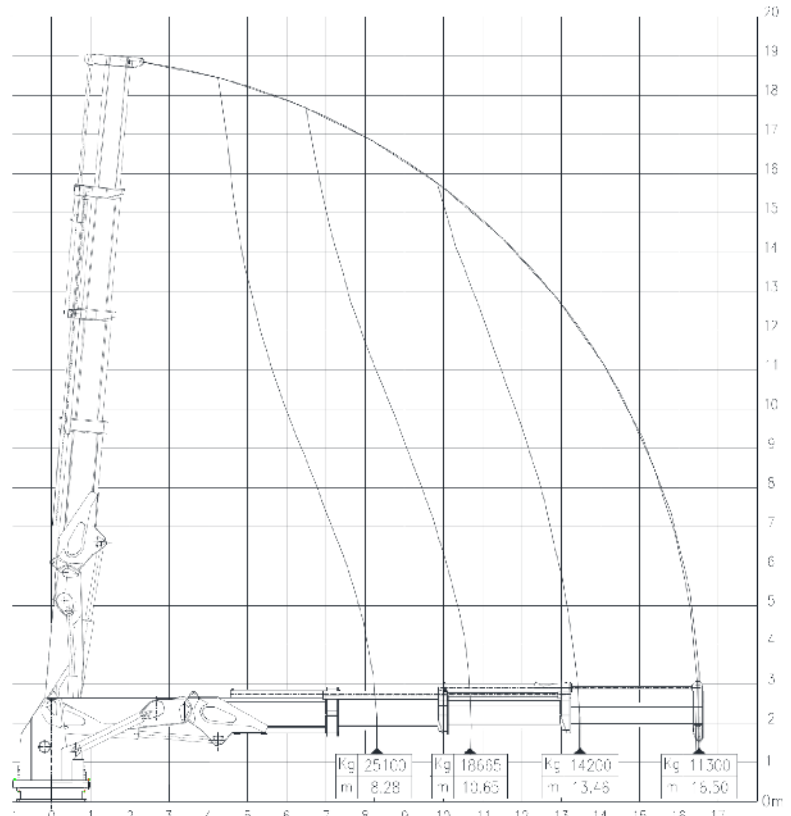
## ACCOMODATION

Heated and airconditioned living spaces for 7 persons, consisting of 2 double cabins and 3 single cabins, a galley and sanitary facilities

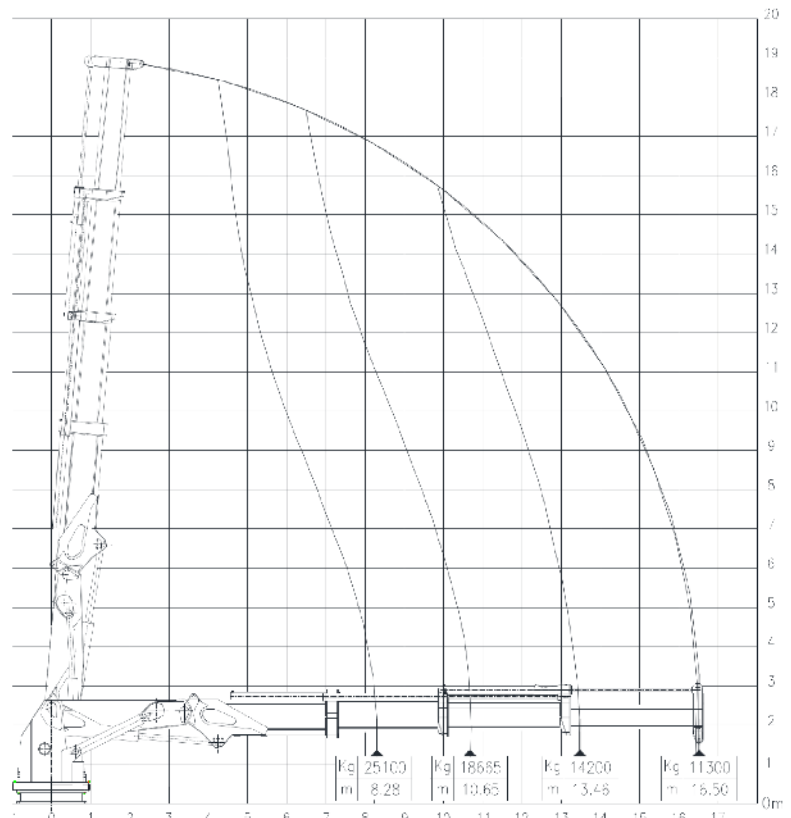
## NAUTICAL AND COMMUNICATION EQUIPMENT

- According GMDSS : Area A3
- Searchlights : 2 x 2000 W Seematz
- Compass : 1 x Cassens & Plat, Reflecta 1
- Radar system : Furuno FR-2117+ ARPA
- GPS : Furuno GP-170
- ECDIS : 2x Furuno FMD3100
- V-Sat : Intellian V80G
- TV Satellite : Intellian T80W
- Gyro compass : Anschuetz STD 22
- Autopilot : Simrad AP-70
- Echosounder : Furuno FE 800
- VHF radio telephone : 2x Thrane & Thrane Sailor 6310
- Navtex : Furuno NX-700
- AIS : Furuno FA 170
- SSB : Furuno FS-1570 , 150 W.
- Inmarsart C : 2x Thrane & Thrane sailor 6110

## Aft Crane AKC 290 LHE3



## Forward Crane AKC LHE3



For more information about chartering please contact us  
Telephone: +31 (0)78 619 25 07 - Email: chartering@hermansr.com