



"Brutus"

DP2 - Shoalbuster 3514

Ebweg 56
2991 LT Barendrecht
The Netherlands

T: +31 (0)78-6192507
E: chartering@hermansr.com
I: www.hermansr.com



GENERAL

Delivery date	: June 2020
Type	: Damen Shoalbuster 3514SD DP2
Basic functions	: Towing, anchor handling, dredge support, offshore wind support, oil & gas support
Classification	: Bureau Veritas I 3/3 {E} * Dynapos AM/ AT-R Offshore support, Hull * MACH, Auth UMS, Cleanship, Green passport
Nat. Authorities	: Dutch flag, Unrestricted navigation
Call sign	: t.b.a
I.M.O. No.	: t.b.a
MMSI No.	: t.b.a

DIMENSIONS

Length	: 35.55	m
Width	: 14.37	m
Depth at sides	: 3.60	m
Min Draught	: 2.40	m
GT / NT	: 499 GT / t.b.a NT	

TANK CAPACITIES

Fuel oil	: 200.00	m ³
Fresh water	: 48.00	m ³
Sewage	: 20.00	m ³
Grey water	: 20.00	m ³
Dirty oil	: 4.80	m ³
Lub. oil	: 5.80	m ³
Hydraulic oil	: 1.50	m ³
Bilge water	: 5.80	m ³
Urea (IMO Tier III)	: 10.0	m ³

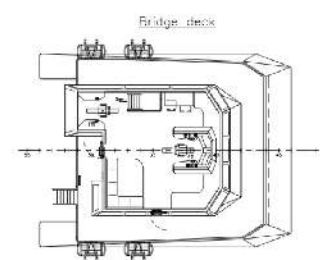
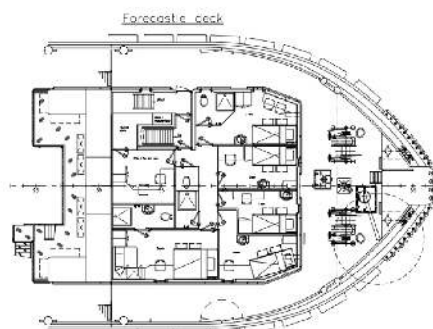
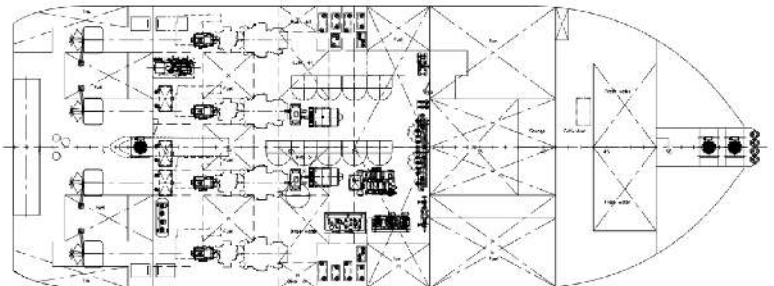
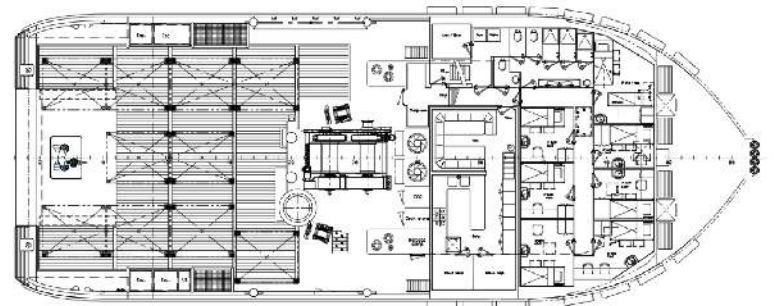
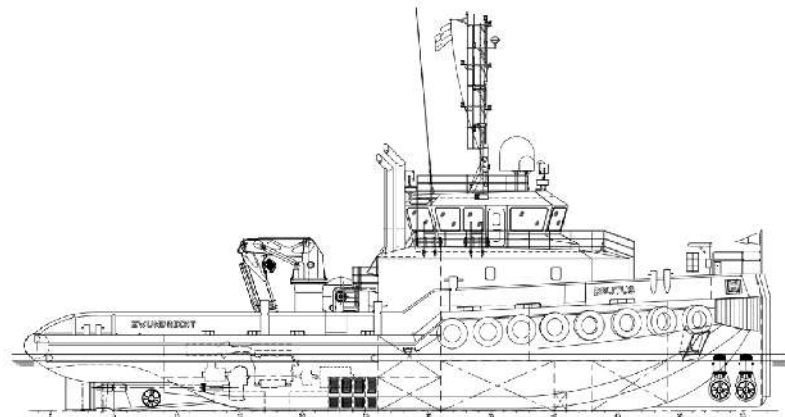
PERFORMANCES

Bollard pull	: 60.0	ton (m)
Speed	: 13.0	knots

PROPULSION SYSTEM

Main engines	: 4 x Cat C32 TTA SCAC (IMO Tier III Hybrid)
Total power	: 3876 bkW (5280 bhp) at 1800 rpm
Gearboxes	: 4 x Reintjes WAF 765/7.091:1 Hybrid
Propulsion	: 4 x Promarin fixed pitch propellers
Diameter	: 4 x 1900 mm in v.d. Giessen Optima nozzles
Bowthruster	: 2 x 184 kW/ 250 HP
Stern thruster	: 1 x 184 kW/ 250 HP
Rudders	: 4x fishtail rudders, 60 degrees each side all rudders are independant controllable

Propulsion system is fully diesel electric-hybrid for fuel efficiency





"Brutus"

DP2 - Shoalbuster 3514

Ebweg 56
 2991 LT Barendrecht
 The Netherlands
 T: +31 (0)78-6192507
 E: chartering@hermansr.com
 I: www.hermansr.com

ACCOMODATION

Heated and air-conditioned living spaces for 21 persons
 3x Single cabin
 9x double cabin (1x hospital)
 1x Client office

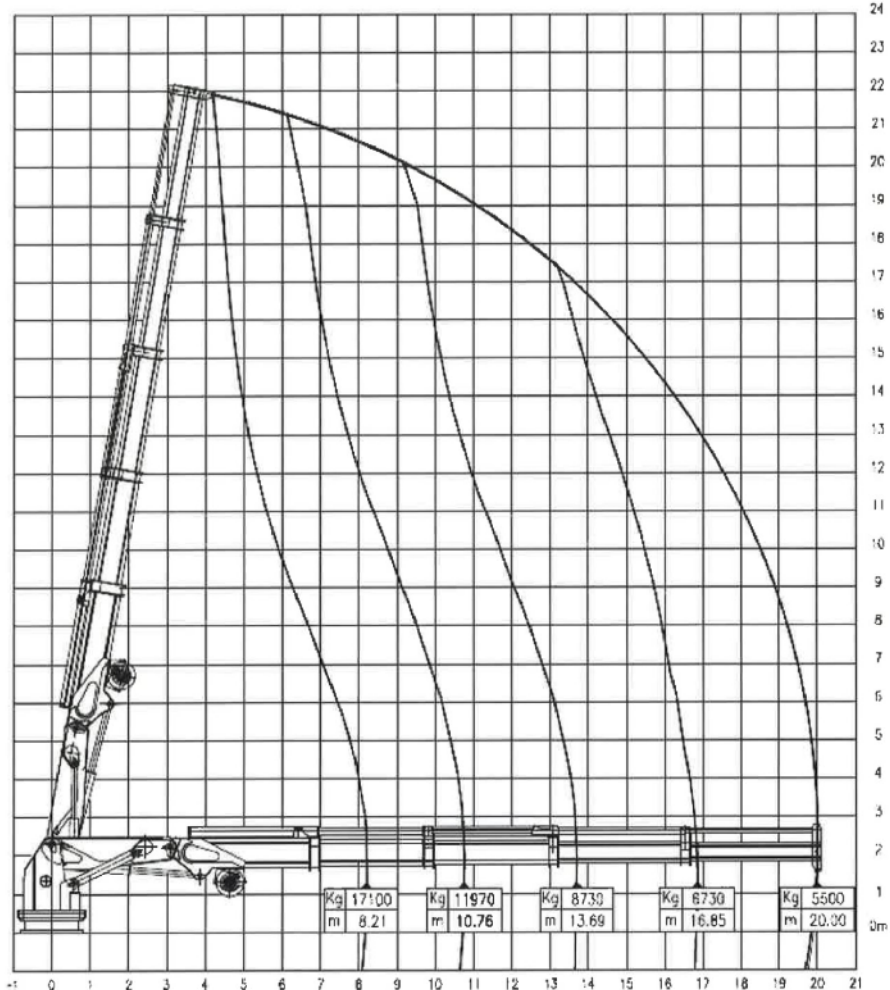
AUXILIARY EQUIPMENT

Generator sets : 1x Cat. C7.1, 147.5 kVA/118 ekW
 : 1 x Cat. C9.3, 321.5 kVA/ 250ekW
 Fuel separator : 2x Westfalia OTC2 1200l/hr each
 Transfer pumps : Water and fuel: SIHI 50 m3/hr at 1,5 bar
 Compressors : 1x Alup SCK 9-8 1200 l/min @ 8 bar
 Hydraulic set : Electrical driven with two E-motors 110kW and one 52kW, 60Hz
 Fresh water maker : 3,8 m³/ 24 hrs
 Sewage plant : 3 m³ /24 hrs

DECK LAYOUT

Anchors : 2 x 550 kg Pool
 Chain : 247.5 m shortlink 24mm
 Deck crane : HS Marine AKC 220 LHE4 5,5 T @ 20 m
 Anchorhandling winch: 100 Ton pull - 160 ton Holding power
 Aft winch : 60 Ton pull - 160 ton Holding power
 Tuggerwinch : 2x Dromec 12 ton
 Hydraulic pins : 1 set of anchorhandling pins + wire stopper
 Maximum deckload : 10 ton/m²
 Free deck space : 200 m²
 A-frame : option for a 40T hydraulic A-frame
 Containers : 4x 20" + 3x 10" in one time
 4-point mooring : 2 winches forward/ 2 winches aft
 Moon Pool : 800 x 600mm integrated in vessels hull
 Container capacity : 4x 20" and 3x20"

Aft Crane AKC 290 LHE3



NAUTICAL AND COMMUNICATION EQUIPMENT

According GMDSS : Area A3
 Searchlights : 3 x 250 W LED Den Haan
 Compass : 1 x Cassens & Plat, Reflecta 1
 Radar system : 2x Furuno FAR-1518BB
 DPS : 2x Kongsberg DPS 110 & 112
 ECDIS : 2x Furuno FMD3100
 V-Sat : 1x Intellian VG130G
 TV Satellite : 1x Intellian T100W
 Gyro compass : 3 x Anschuetz compact 22
 Autopilot : 1x Simrad AP-70
 Echosounder : 1x Furuno FE 800
 Dynamic positioning : Kongsberg DP2 system
 Motion reference unit: 2x Kongsberg MRU-2
 Laser reference : 1x Kongsberg SpotTrack
 Navtex : 1x Furuno NX-700
 AIS : 1x Furuno FA 170
 SSB : 1x Furuno FS-1570 , 150 W.
 Inmarsat C : 2x Thrane & Thrane sailor 6110
 VHF Radio : 3x Sailor RT6222

For more information about chartering please contact us
 Telephone: +31 (0)78 619 25 07 - Email: chartering@hermansr.com