



# "Baloe" Shoalbuster 2308

Ebweg 56  
2991 LT Barendrecht  
The Netherlands

T: +31 (0)78-6192507  
E: chartering@hermansr.com  
I: www.hermansr.com



## GENERAL

|                  |  |
|------------------|--|
| Yard no.         | : 1570   |
| Delivery date    | : May 2006   |
| Type             | : Damen Shoalbuster 2308   |
| Basic functions  | : Towing, survey, anchor handling, dredge-, plough- and coastal construction support |
| Classification   | : Bureau Veritas I 3/3 {E} * Coastal Area<br>200 miles from shore * MACH             |
| Nat. Authorities | : Dutch Shipping Inspection<br>200 miles from coast/ continuous                      |
| service          |  |
| Call sign        | : PBGI   |
| I.M.O. No.       | : 9382463  |
| MMSI No.         | : 245431000  |

## DIMENSIONS

|                |                  |   |
|----------------|------------------|---|
| Length         | : 23.35          | m |
| Width          | : 8.64           | m |
| Depth at sides | : 2.99           | m |
| Depth aft.     | : 2.10           | m |
| GT/NT          | : 123 GT/ 37 NT. |   |

## TANK CAPACITIES

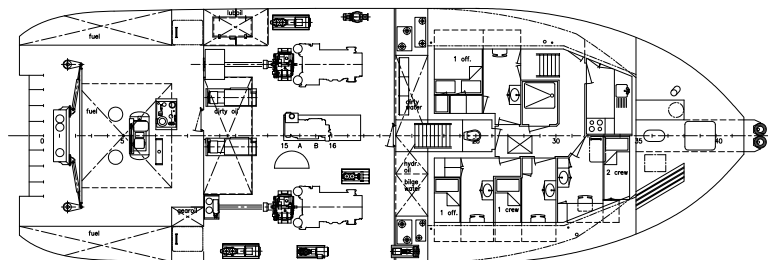
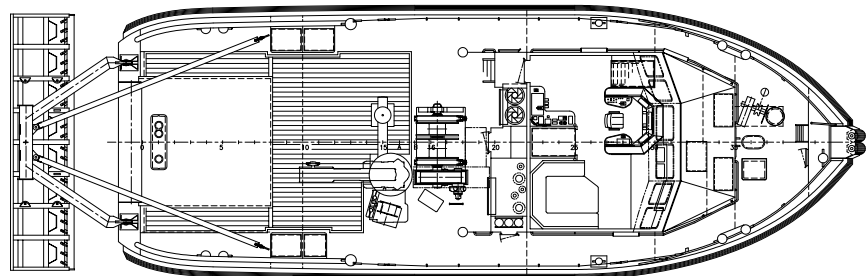
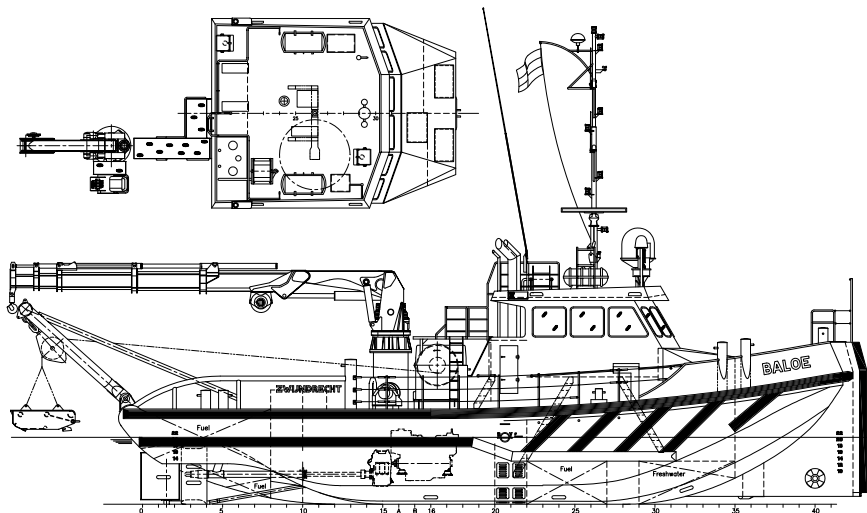
|               |         |                |
|---------------|---------|----------------|
| Fuel oil      | : 45.00 | m <sup>3</sup> |
| Fresh water   | : 13.90 | m <sup>3</sup> |
| Lub. oil      | : 2.0   | m <sup>3</sup> |
| Hydraulic oil | : 0.9   | m <sup>3</sup> |
| Gearbox oil   | : 0,6   | m <sup>3</sup> |

## PERFORMANCES

|              |        |         |
|--------------|--------|---------|
| Bollard pull | : 22   | ton (m) |
| Speed        | : 10.5 | knots   |

## PROPULSION SYSTEM

|                |                                       |
|----------------|---------------------------------------|
| Main engines   | : 2 x Caterpillar 3412 D              |
| Total power    | : 1260 kW (1720 bhp) at 1800 rpm.     |
| Gearboxes      | : 2 x Reintjes WAF 464L/5.042:1       |
| Propulsion     | : 2 x Promarin fixed pitch propellers |
| Diameter       | : 2 x 1600 mm in v.d. Giessen         |
| Optima nozzles |                                       |
| Bowthruster    | : 1 x Kalkman 120 HP.                 |
| Rudders        | : 2x fishtail rudders (65 graden)     |





# “Baloe” Shoalbuster 2308

Ebweg 56  
2991 LT Barendrecht  
The Netherlands

T: +31 (0)78-6192507  
E: chartering@hermansr.com  
I: www.hermansr.com

## AUXILIARY EQUIPMENT

- Generator sets : 2 x Hatz 4L41 , 30 kVA,50 Hz , 230/400 V  
power : 1 x Cat C9, 187 KW voor Hydraulic  
Compressors : 1 x 1.100 ltr/min + 1 x 150 ltr/min.  
Transfer pumps : For water and fuel with meters:  
SIHI 25 m3/hr at 1.5 bar  
Moonpool : Build in bow for clear view with  
echosounder 600 x 400 mm

## DECK LAYOUT

- Anchors : 1 x 200 kg Pool , 1 x 270 kg Pool (HHP)  
Chain : 137.5 m shortlink 19 mm  
Anchorhandling winch: Ridderinkhof, 30 ton @ 6 m/min  
Deck crane : HS Marine 80 T/m 4SL , 4.4 ton @ 15,5 m  
Towing winch : Ridderinkhof , 30 ton @ 6 m/min  
Maximum deckload : 10 ton/ m<sup>2</sup>  
Towing pins : 3 x WK Hydraulics  
A-Frame : 25 ton SWL A-frame  
Plough : Several available  
Container capacity : 2x 20”

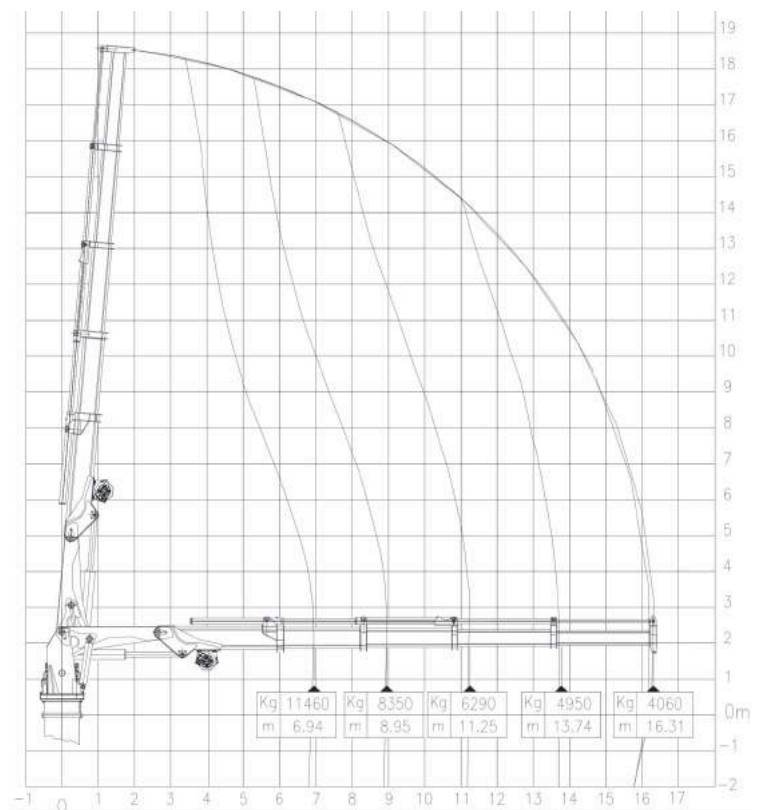
## ACCOMODATION

Heated and aircondioned living spaces for six persons, consisting of a captain's cabin , a C.E. cabin ,one single crew cabins, one double crew cabin, a galley and sanitary facilities.

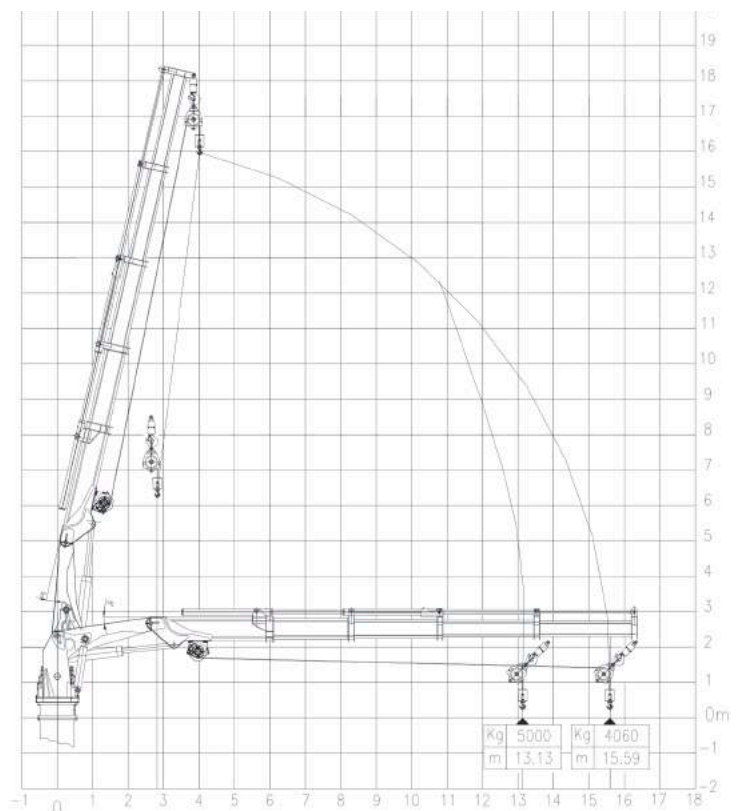
## NAUTICAL AND COMMUNICATION EQUIPMENT

- According GMDSS : Area 3  
Searchlights : Seematz 2 x 2000 W  
Compass : Kotter type, electric repeater  
Radar system : Furuno FR-2117+ ARPA  
D-GPS/ AIS : MX 420  
Plotter : Transas  
Gyro compass : Anschutz STS 22  
Autopilot : RH Sea/river pilot 75  
Echosounder : Furuno FC- 720  
VHF radio telephone : 3 x sailor with DSC  
Navtex : Furuno NX 500  
Rate of turn : ECO 300  
SSB : Sailor HT 4610/HC-4500B  
V-SAT : 1x Intellian V80G

## Crane AKC 115 LHE4 with hook



## Crane AKC 115 LHE4 with winch



For more information about chartering please contact us  
Telephone: +31 (0)78 619 25 07 - Email: chartering@hermansr.com