



# "Bommel" Shoalbuster 2509

Aventurijn 202  
3316 LB Dordrecht  
The Netherlands

T: +31 (0)78-6192507  
E: chartering@hermansr.com  
I: www.hermansr.com



## GENERAL

Yard no. : 571667 {Damen Shipyards Hardinxveld}  
Delivery date : February 2013  
Type : Damen Shoalbuster 2509  
I.M.O. nr : 9643659  
Basic functions : Towing, mooring, pushing, anchor handling, dredge support, supply, survey, grapnel  
Classification : Bureau Veritas I 3/3 {E}, I HULL MACH Tug  
Unrestricted navigation, AUT UMS  
Nat. Authorities : Dutch Shipping Inspection  
Unrestricted area / continuous service

## DIMENSIONS

Length : 24.99 m  
Width : 9.00 m  
Depth at sides : 3.19 m  
Draft aft. : 2.40 m  
Netto tonnage : 52 ton  
Gross tonnage : 174 ton

## TANK CAPACITIES

Fuel oil : 62.2 m<sup>3</sup>  
Fresh water : 18 m<sup>3</sup>  
Sewage : 4.7 m<sup>3</sup>  
Dirty oil : 3.1 m<sup>3</sup>  
Lub. oil : 1.9 m<sup>3</sup>  
Hydraulic oil : 0.9 m<sup>3</sup>  
Gearbox oil : 0.4 m<sup>3</sup>  
Bilge water : 0.9 m<sup>3</sup>

## PERFORMANCES

Bollard pull : 27.6 ton(m)  
Speed : 11 knots

## PROPULSION SYSTEM

Main engines : 2 x Caterpillar C32-TTA ACERT  
Total power : 1492 bkW (2000 bhp) at 1800 rpm  
Gearboxes : 2 x Reintjes WAF 562L/5.947:1  
Propulsion : 2 x Promarin fixed pitch propellers  
Diameter : 2 x 1800 mm in v.d Giessen Optima nozzles  
Bowthruster : 175 bhp, hydraulically driven  
Rudders : 2 x fishtail rudders, 60 degrees

## AUXILIARY EQUIPMENT

Generator sets : 2 x John Deere 4045TFM76  
Capacity : 2 x 60 kVA, 50Hz, 230/400V  
Fuel separator : Alva Laval MIB 303 760L/Hr  
Transfer pumps : for water and fuel : SIHI 32 m<sup>3</sup>/hr at 3.5 bar  
Hydraulic set : Caterpillar C-09 TA 315kW @ 2250 rpm  
With clutchable hydraulic bow thruster pump  
Compressor : Alup SCK 10-8, 70 m<sup>3</sup> / hr @ 8 bar  
Moonpool 1 : 600 x 800 mm  
Moonpool 2 : 400 mm diameter

## DECK LAYOUT

Anchor winch : Ridderinkhof , hydraulically driven  
Anchorhandling winch: 40 ton @ 6 m/min  
Towing winch : 9 ton @ 20 m/min, 77 ton holding power  
Deck crane : HS-Marine AKC 145LHE4 - 4.650kg @17.00 m  
Towing pins : MKB quatro pin type  
Chain / wire stopper : MKB type  
Tugger winch : Dromec HPV-12000 12T @ 4.5/12 m/min  
A-Frame + plough : 25 ton SWL + 10 m plough (8 ton)  
Deckload : 10 ton/m<sup>2</sup>  
Anchors : 1 x 270 kg Pool (HHP), 1 x 225 kg Pool (HHP)  
Chain : 137.5 m short-link 19 mm chain

## ACCOMODATION

Heated and air-conditioned living spaces for 5 persons, consisting of a captain's cabin, an officers cabin, one single crew cabin and one double crew cabin, a galley and sanitary facilities.

## NAUTICAL AND COMMUNICATION EQUIPMENT

According GMDSS : Area A3  
Searchlights : Pesch 2x 3000 W  
Compass : Kotter type, electric repeater  
Radar system : Kelvin Hughes - Manta digital  
D-GPS : Leica MX 510  
Gyrocompass : Anschuetz Standard 22 Compact  
Autopilot : RH Sea/river pilot 75  
Echosounder : Furuno FE 700  
VHF radio telephone : 3 x sailor RT6222, 25 W  
Navtex : Furuno NX 700  
AIS : Furuno FA-150  
Plotter : Tresco coaster  
Communication : Inmarsat C, Satellite telephone, GSM

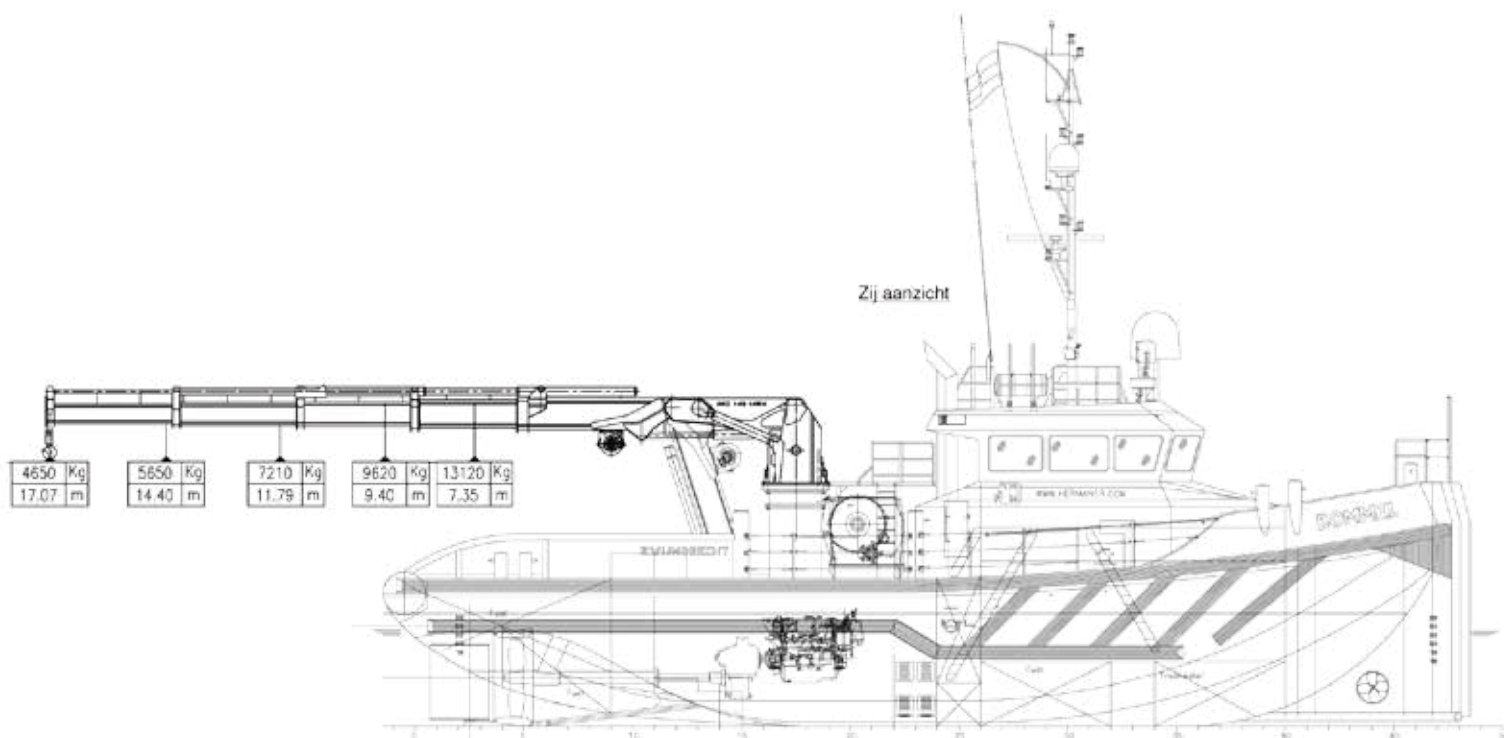
**For more information about chartering please contact us**  
Telephone: +31 (0)78 619 25 07 - Email: chartering@hermansr.com



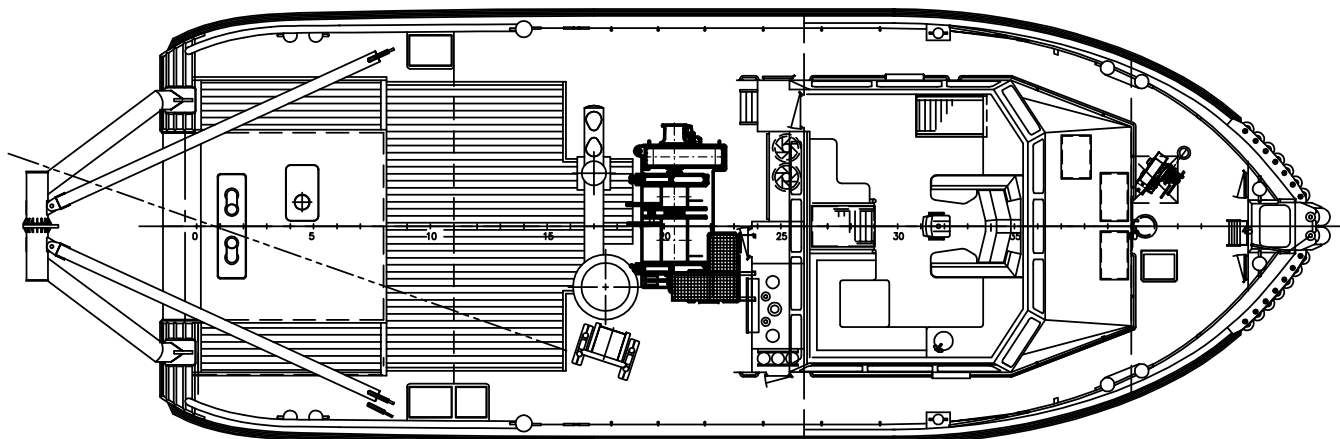
# “Bommel” Shoalbuster 2509

Aventurijn 202  
3316 LB Dordrecht  
The Netherlands

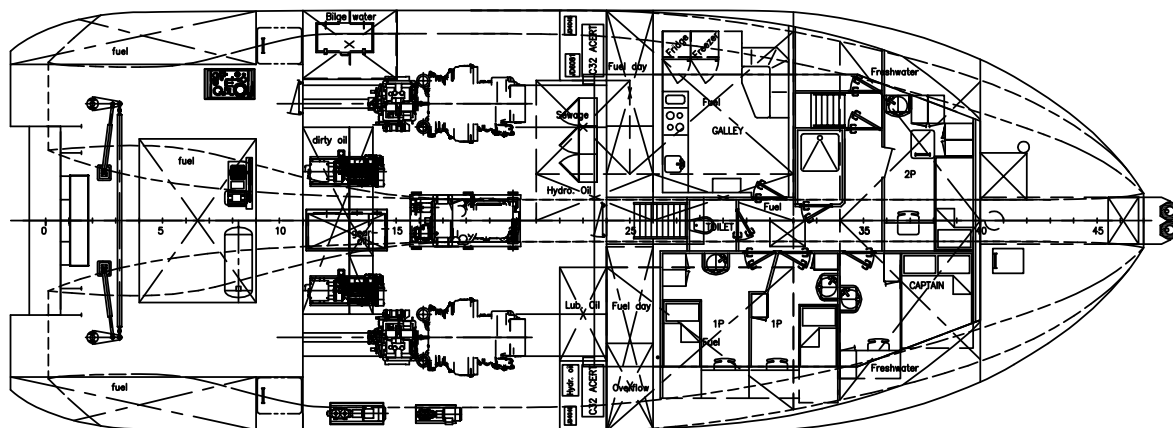
T: +31 (0)78-6192507  
E: chartering@hermansr.com  
I: www.hermansr.com



Main deck



Below main deck



For more information about chartering please contact us  
Telephone: +31 (0)78 619 25 07 - Email: chartering@hermansr.com