



"Panda" Multicat 2712

Aventurijn 202
3316 LB Dordrecht
The Netherlands

T: +31 (0)78-6192507
E: chartering@hermansr.com
I: www.hermansr.com



GENERAL

Delivery date : March 2017
 Type : Damen Multicat 2712
 Basic functions : Towing, anchor handling , dredge support, offshore wind support, oil & gas support
 Classification : Bureau Veritas I 3/3 {E} * Tug
 Unrestricted Area * MACH
 Nat. Authorities : Dutch Shipping Inspection
 Unrestricted navigation
 Call sign : PCOA
 I.M.O. No. : 9807798
 MMSI No. : 245852000

DIMENSIONS

Length : 27.70 m
 Width : 11.45 m
 Depth at sides : 3.90 m
 Max Draught : 2.85 m
 GT / NT : 299 GT / 76 NT

TANK CAPACITIES

Fuel oil : 110.00 m³
 Fresh water : 31.30 m³
 Sewage : 10.50 m²
 Dirty oil : 1.70 m²
 Lub. oil : 1.50 m³
 Hydraulic oil : 2.30 m³
 Bilge water : 4.10 m³

PERFORMANCES

Bollard pull : 33.0 ton (m)
 Speed : 10.0 knots

PROPULSION SYSTEM

Main engines : 2 x Caterpillar C32 TTA ACERT
 Total power : 1790 bkW (2435 bhp) at 1800 rpm
 Gearboxes : 2 x Reintjes WAF 572L/7.091:1
 Propulsion : 2 x Promarin fixed pitch propellers
 Diameter : 2 x 1900 mm in v.d. Giessen Optima nozzles
 Bowthruster : 1 x 184 Kw
 Rudders : 2x fishtail rudders, 45 degrees

AUXILIARY EQUIPMENT

Generator sets : 2x Cat. C 04.4, 107 kVA each
 Hydraulic set : 1 x Caterpillar C 12, 339 KW
 Fuel separator : Facet MV-11-AG
 Transfer pumps : for water and fuel: SIHI 50 m3/hr at 1,5 bar
 Compressors : ABAC compressors @ 1050 l/min @ 8 bar

DECK LAYOUT

Anchors : 2 x 300 kg Pool
 Chain : 192.5 m shortlink 17,5 mm
 Deck crane fore ship : HS Marine AKC 290 LHE3 11,5 T @ 16,5 m
 Deck crane aft ship : HS Marine AKC 290 LHE3 11,5 T @ 16,5 m
 Forward winch : 100 Ton pull - 150 ton Holding power
 Aft winch : 50 Ton pull - 100 ton Holding power
 Tuggerwinch : Dromec 12 ton
 Hydraulic pins : 1 set of anchorhandling pins + wire stopper
 Maximum deckload : 10 ton/m²
 Free deck space : 150 m²

ACCOMODATION

Heated and airconditioned living spaces for 7 persons, consisting of 2 double cabins and 3 single cabins, a galley and sanitary facilities

NAUTICAL AND COMMUNICATION EQUIPMENT

According GMDSS : Area A3
 Searchlights : 2 x 2000 W Seematz
 Compass : 1 x Cassens & Plat, Reflecta 1
 Radar system : Furuno FR-2117+ ARPA
 GPS : Furuno GP-170
 ECDIS : 2x Furuno FMD3100
 V-Sat : Intellian V80G
 TV Satellite : Intellian T80W
 Gyro compass : Anschuetz compact 22
 Autopilot : Simrad AP-70
 Echosounder : Furuno FE 800
 VHF radio telephone : 2x Thrane & Thrane Sailor 6310
 Navtex : Furuno NX-700
 AIS : Furuno FA 170
 SSB : Furuno FS-1570 , 150 W.
 Inmarsart C : 2x Thrane & Thrane sailor 6110
 Sat Phone : Irridium satellite phone

For more information about chartering please contact us

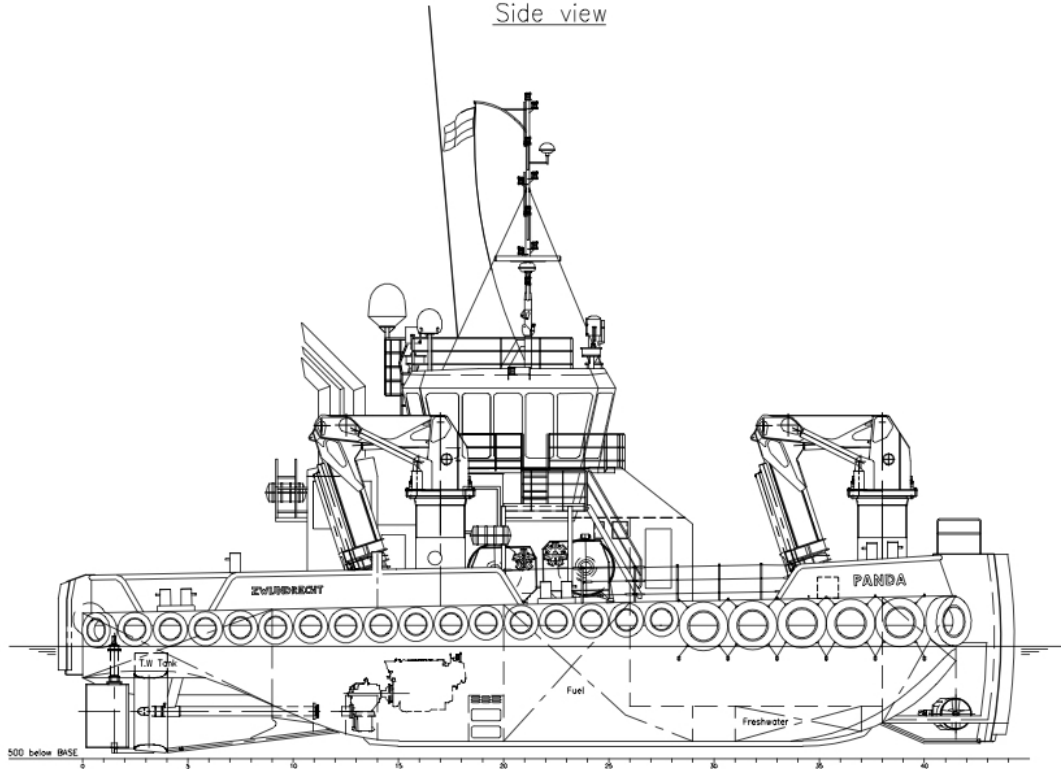
Telephone: +31 (0)78 619 25 07 - Email: chartering@hermansr.com



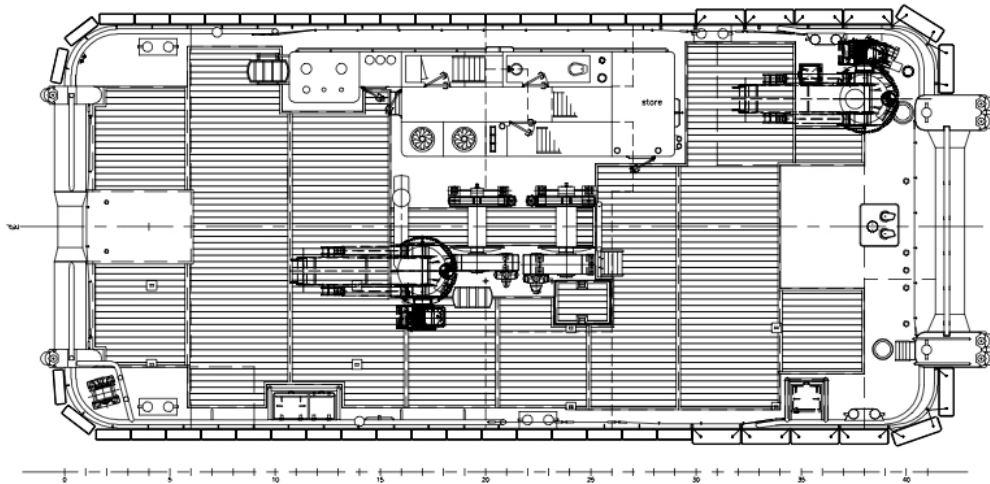
“Panda” Multicat 2712

Aventurijn 202
3316 LB Dordrecht
The Netherlands
T: +31 (0)78-6192507
E: chartering@hermansr.com
I: www.hermansr.com

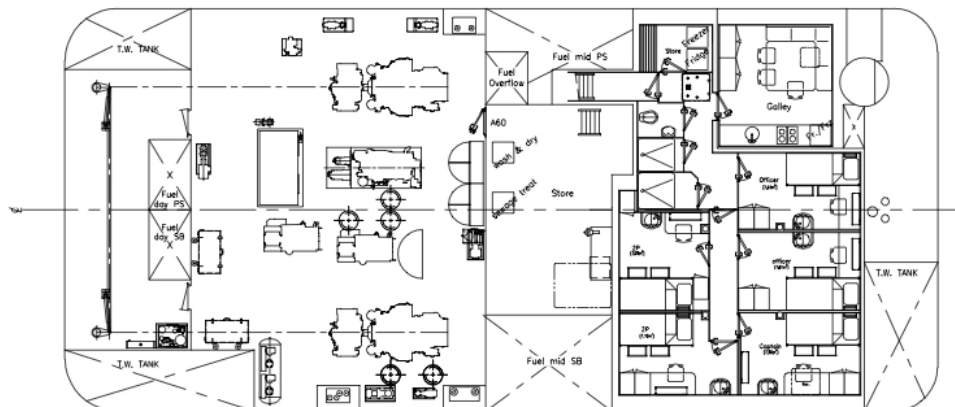
Side view



Main deck



Below main deck



For more information about chartering please contact us
Telephone: +31 (0)78 619 25 07 - Email: chartering@hermansr.com